

SYSTEM REQUIREMENTS

- DoorBird IP Video Door Station D10x/D11x/D21x Series.
- Uniview Network Video Recorder.

ADDITIONAL INFORMATION

The following guide will take you through the steps of setting up a DoorBird IP Video Door Station in connection with the Uniview NVR. Please make sure that the Uniview NVR is online and is connected to the same local network as your DoorBird IP Video Door Station.

Please also make sure that your DoorBird is online, using this service: <https://www.doorbird.com/checkonline>
The local IP address of your DoorBird is available from the same page.

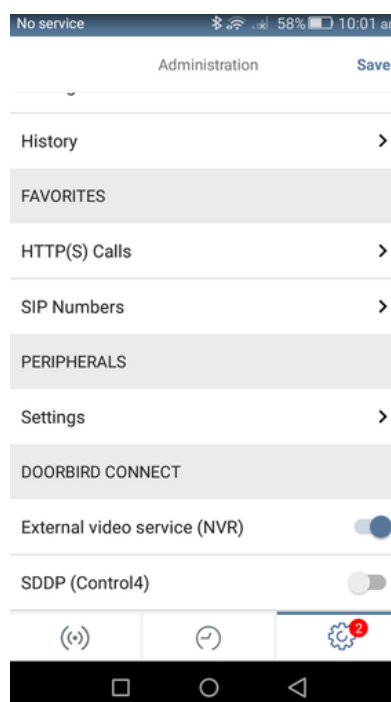
- You can only monitor the DoorBird Camera and schedule recording for events like motion, audio detection etc.

1. SETTING UP THE DOORBIRD IP VIDEO DOOR STATION

For the DoorBird IP Video Door Station to be properly recognized by the Uniview Network Video Recorder, the “NVR” setting of the DoorBird IP Video Door Station must be activated

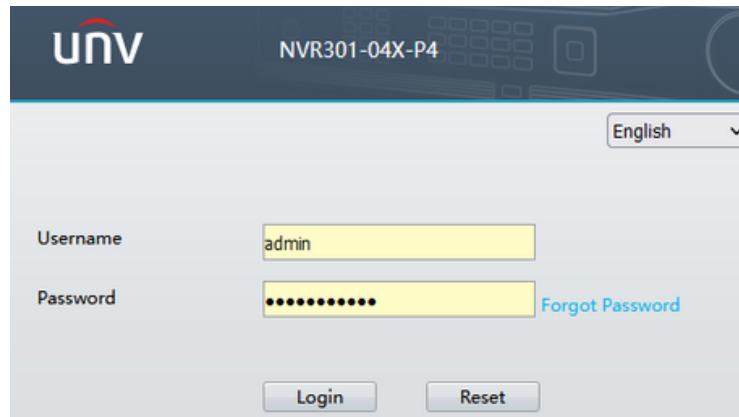
1.1 Open the DoorBird App and log into the administration area under "Settings → Administration" using the administrator Username and Password credentials from the "DIGITAL PASSPORT" document that was shipped with your DoorBird IP Video Door Station.

1.2 Find the “External video service (NVR)” toggle under “DOORBIRD CONNECT” from the main menu and enable it.

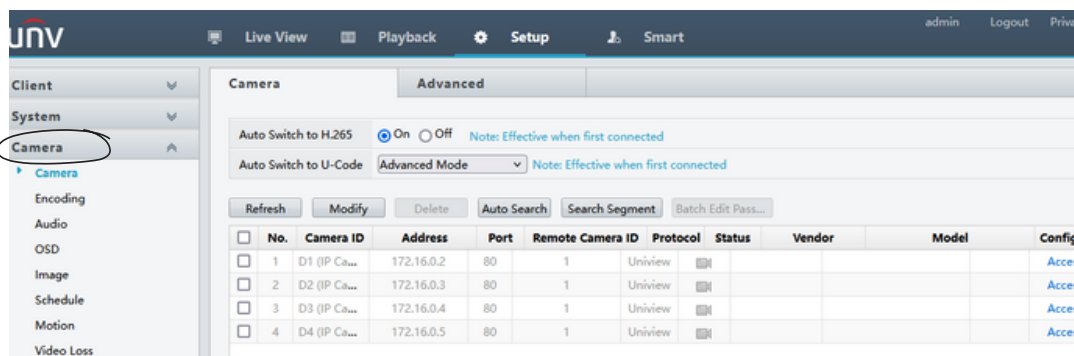


2. SETTING UP THE UNIVIEW DEVICE

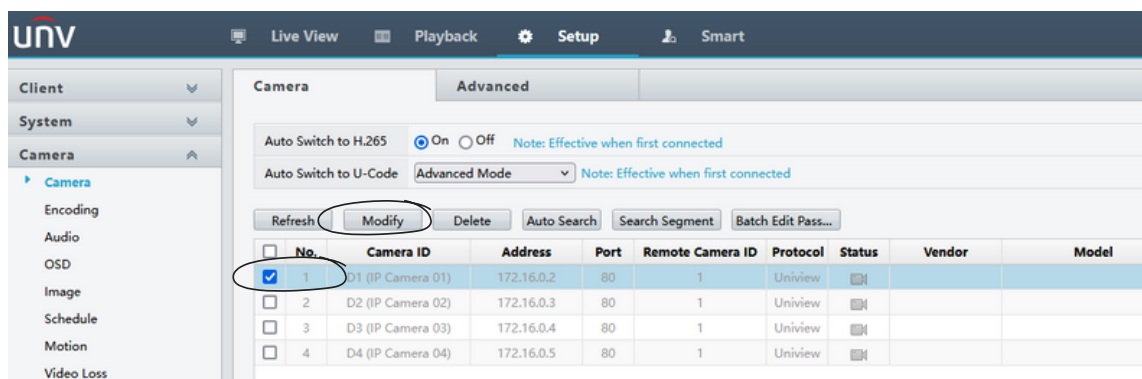
2.1 Login into the web browser with the IP address of Uniview device.



2.2 Click on camera --> Select Camera.



2.3 Click on D1(IP camera 01) --> Modify.



Note: You can add DoorBird as **ONVIF** and **custom** mode please follow either one mode to setup DoorBird and follow the below steps accordingly.

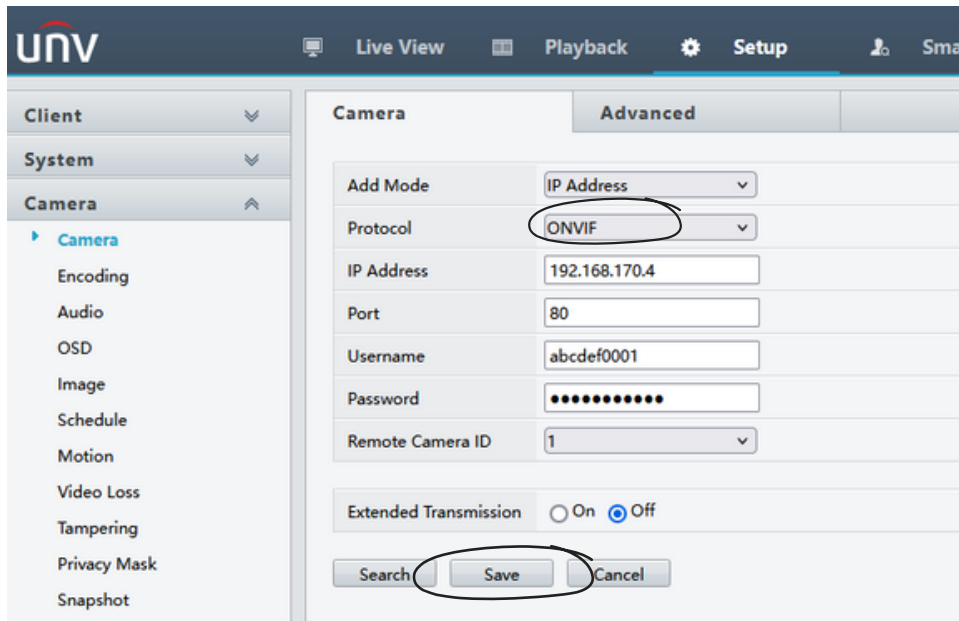
2.4 In this step DoorBird is added as **ONVIF** device.

Click on D1(IP camera 01) --> Modify.

Select Add Mode --> IP address, Protocol --> ONVIF, Enter the IP address of DoorBird, Enter Username and Password of User1/User2/ User-n, disable Extended Transmission.

Save the Settings and the Live view will display in the next few minutes.

Note: If you are unable to see the live view then please check for credentials.

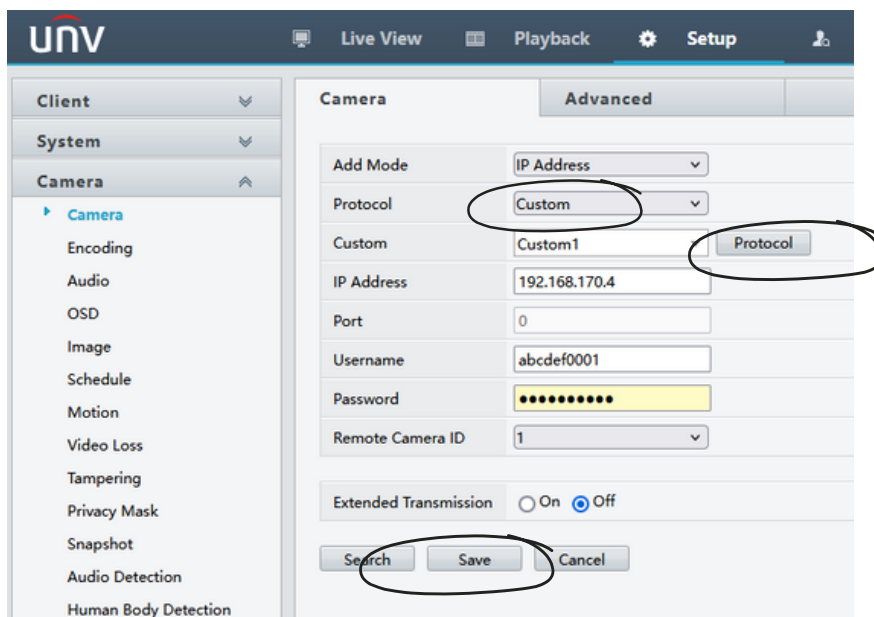


Note: Please go through product details to know more about the device.

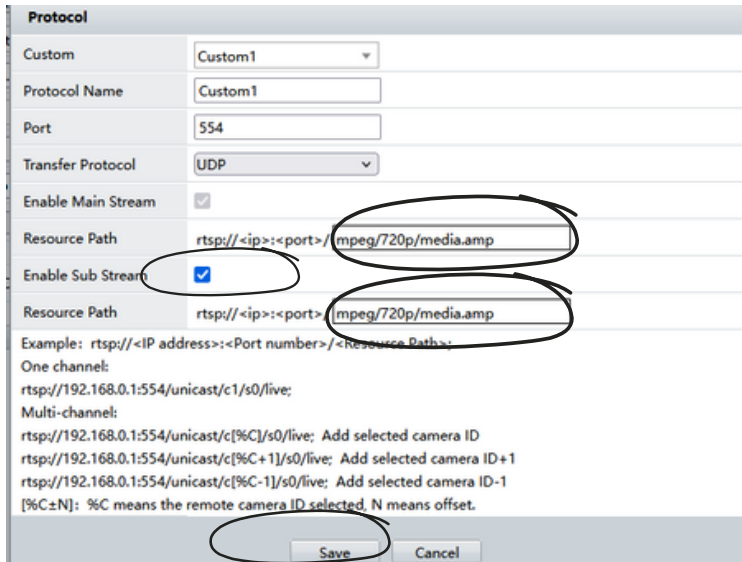
<https://www.uniview.com/Products/NVR/Easy/NVR301-04X-P4/>

2.5 In this step DoorBird is added as a **custom**

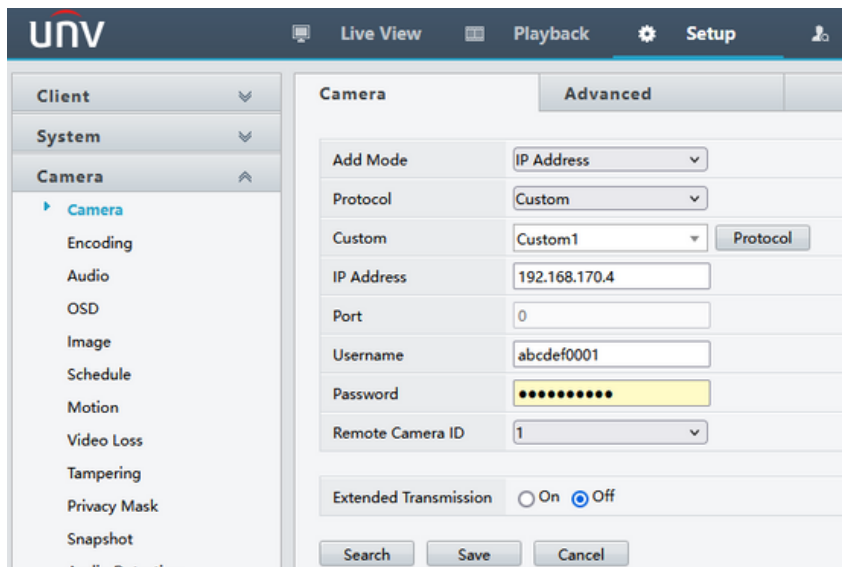
Select Add Mode --> IP address, Protocol --> custom, Enter the IP address of DoorBird, Enter Username and Password of User1/User2/ User-n, disable Extended Transmission.



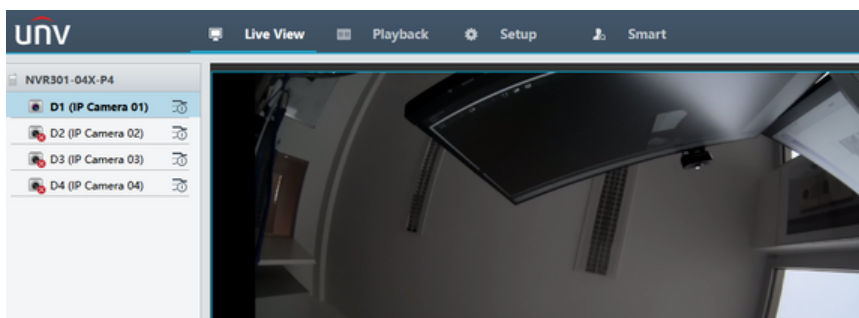
2.6 Click on Protocol. Select Custom1. Enter Resource path `mpeg/720p/media.amp`
Click on Save.



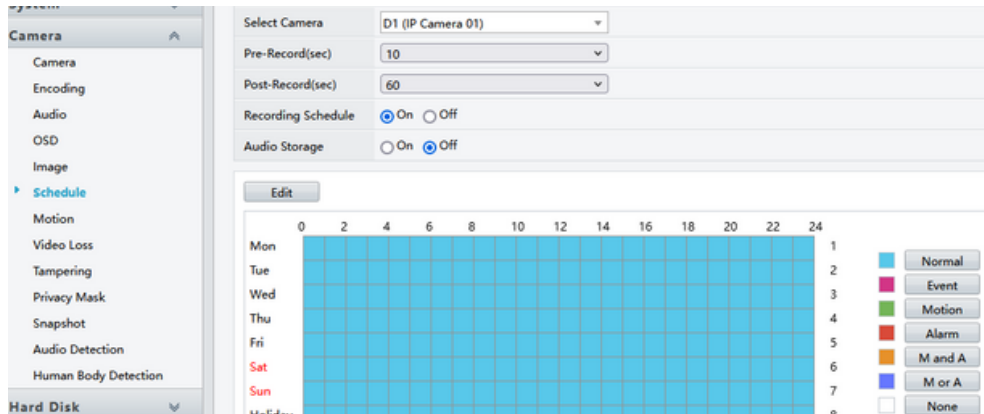
2.7 After entering the RTSP resource path in protocol settings, save the camera settings.



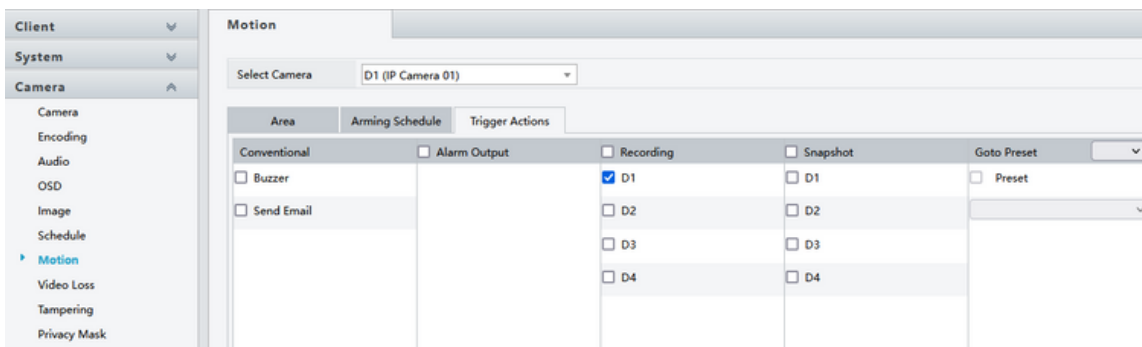
2.8 Click on Live view to see the stream.
If you are not getting stream please check the IP address, Credentials, and Stream link.



2.9 Go to Schedule and schedule the event according to your requirement.



2.10 For events you can add the trigger actions as shown below .



Note: If you have any questions or problems with the products "Uniview" device please contact the manufacturer directly online: <https://www.uniview.com/Support/>

Note: For questions and problems regarding our devices (DoorBird IP Video Door Station or DoorBird IP Upgrade), Please get in touch with our technical support via the contact form online: <https://www.doorbird.com/de/contact>

FIRMWARE INFORMATION

This manual was tested using the following versions:

1. Uniview

Model: NVR301-04X-P4

Firmware version: NVR-B3601.33.17.220920

2. Door Bird IP Video Door Station:

Hardware device series: D21DKH-V2A

Software Version: 000141

Hardware device series: D1102FV

Software Version: 000141

Hardware device series: D101S

Software Version: 000141