

SYSTEM REQUIREMENTS

- DoorBird IP Video Door Station D10x/D11x/D20x/D21x.
- Iddero HC3-KNX or HC3L-KNX Touch Panel

ADDITIONAL INFORMATION

The following guide will take you through setting up a DoorBird IP Video Door Station in connection with an Iddero HC3 or HC3L touch panel. For the remainder of this document we will refer to both as "HC3".

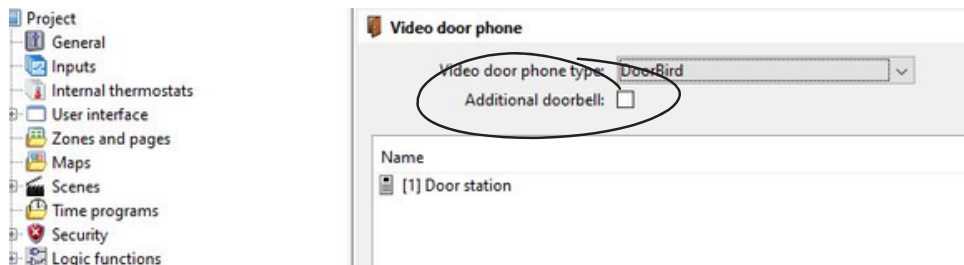
Please ensure the Iddero HC3 touch panel receives an IP address and is connected to the same local network your DoorBird IP Door Door Station is connected to. Please also make sure that your DoorBird is online, using this service:

<https://www.doorbird.com/checkonline>

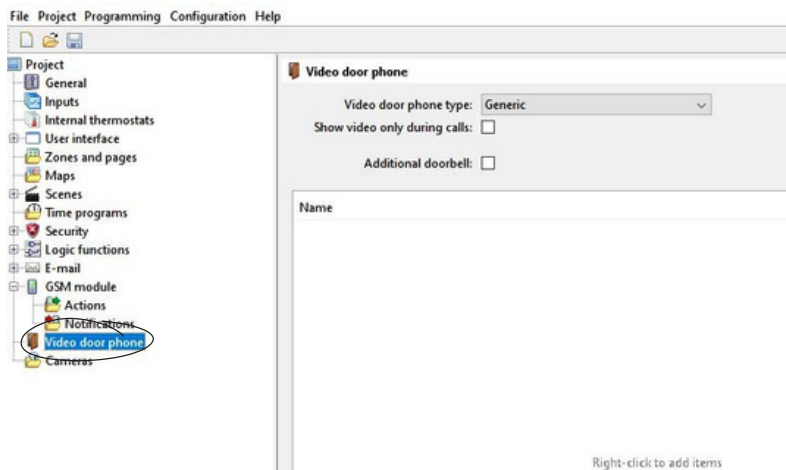
The local IP address of your DoorBird is available from the same page.

1. SETTING UP THE IDDERO HC3 TOUCH PANEL

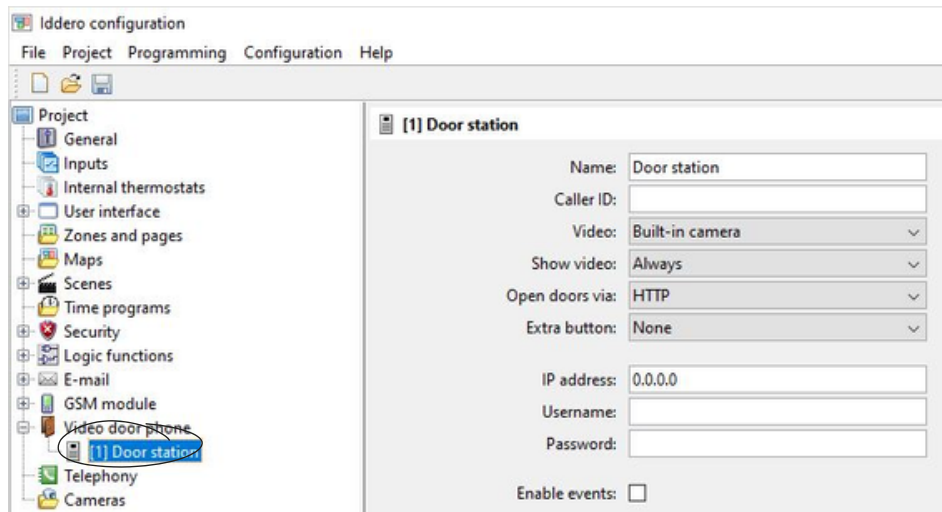
1. Open the Iddero Configuration application.
2. Select **Video door phone** from the menu on the left.



3. From the **Video Door phone type** --> select DoorBird
4. Right- click on the white area to bring up the context menu and click on "add"



5. Double-click on the newly created device in the list to bring up its properties:



- Enter an arbitrary name for the DoorBird IP Video Door Station in the **Name** field, e.g. "DoorBird". This name will be shown in the touch panel user interface.
- The **Caller ID** field is only needed when more than one door station is configured. If used, it must match the "SIP User" configured in the DoorBird door station.
- Video** field: an external camera can be selected, instead of the DoorBird built-in camera.
- The **Show video** field determines when the video will be shown. If more than one indoor monitor is used, it is recommended to set this to "Only during calls".
- The **Open doors via** parameter determines how the touch panel controls the door switches. By default, it is set to "HTTP" to send commands as HTTP requests. This can optionally be changed to "SIP (DTMF)" which uses DTMF codes instead. In this case:
 - You will need to enter DTMF codes for the main door and optionally (see below) for the courtesy light.
 - The DTMF functionality must also be enabled and configured in the Door Station.

Note: The transmission of DTMF codes is only possible during an active call.

- The **Extra button** parameter allows the configuration of an additional button that can be used to control a courtesy light.
- Enter the **IP address** field to the IP address of your DoorBird IP Video Door Station.
- Enter the **Username** to the App username of your DoorBird IP Video Door Station (e.g. "user0001") and enter the corresponding password into the **Password** field.

6. Bring the Iddero touch panel into installation mode –if you haven't already– by rebooting the device and holding your finger down on the screen area for at least three seconds.

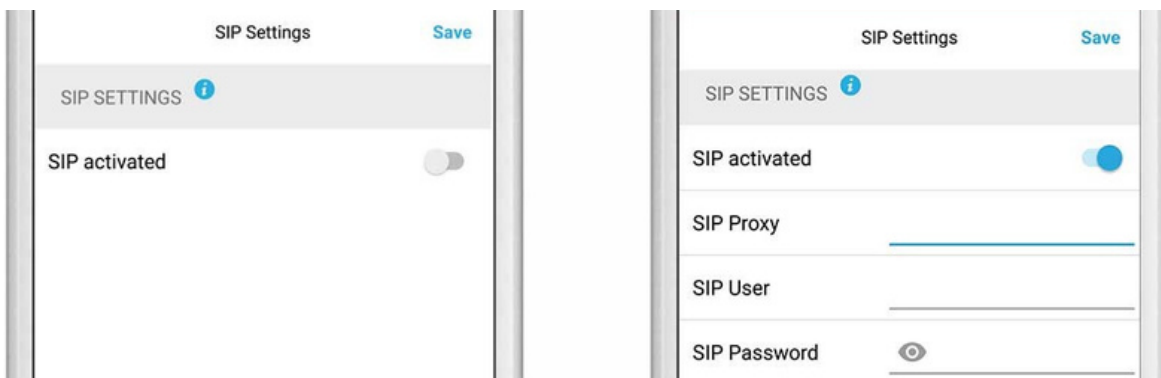
7. From the top menu of the Iddero Configuration application, go to "Programming → Program..." and enter the IP address of the Iddero touch panel, as well as the installer username and password.

8. Click "Accept" to program the Iddero touch panel.

2. SETTING UP THE DOORBIRD IP VIDEO DOOR STATION

For the DoorBird IP Video Door Station to be properly able to communicate with the Iddero HC3 touch panel, the DoorBird device’s SIP settings must be adjusted accordingly.

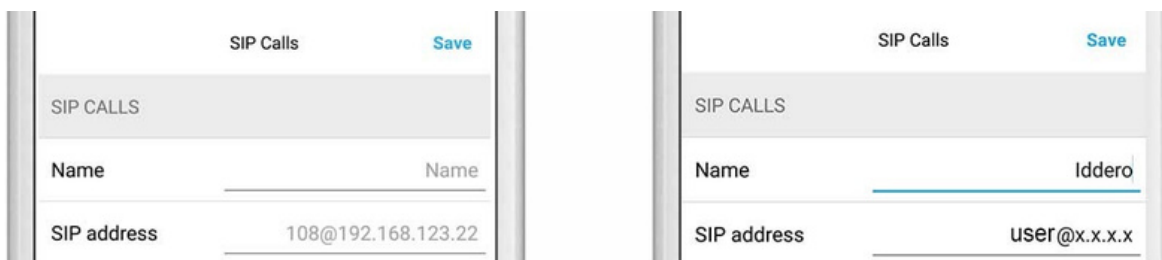
1. Open the DoorBird App and log into the **Administration** by clicking the “gear” symbol in the bottom right and scroll to **FURTHER FUNCTIONALITY**. Enter the user and password credentials from the **“DIGITAL PASSPORT”** document that was shipped with your DoorBird IP Video Door Station.
2. Under **EXPERT SETTINGS**, select “SIP Settings” and enable “SIP activated” Optionally (only required if configuring multiple door stations), enter a value in the “SIP user” field (this must match the “Caller ID” configured in the Iddero touch panel).



3. Enable the DTMF, and enter the “Relay 1 PIN” (and optionally the “Light PIN”) to the respective DTMF codes entered during configuration of the Iddero touch panel.



4. Go back to the main administration area, under **FAVORITES** and tap on “SIP Numbers”, then tap “Add”.
5. In the subsequent screen, enter an arbitrary name in the **Name** field, e.g. “Iddero”. For the SIP address, enter the IP address of your Iddero touch panel, prefixed with any arbitrary name or SIP user ID and an “@”-symbol, e.g., “user@x.x.x.x”



The schedule for the doorbell needs to be properly set up. Depending on the model of the DoorBird IP Video Door Station, choose one of the following options:

A) For all devices with a single call button (e.g. D1101V, D2101V, D2101KV, etc.), find the corresponding settings in the DoorBird App administration menu **EXPERT SETTINGS** when selecting "**Schedule for doorbell**".

In this screen, tap the bell symbol in the upper-left corner, select "SIP call" and fill out the schedule as per your requirements for this event.

B) For all devices with multiple call buttons (e.g. D2102V, D2103V, D2112V, etc.), find the corresponding settings in the DoorBird App administration menu **BUTTON CONFIGURATION** when selecting "Settings".

Select the call button the event needs to get assigned to and go to "**Schedule for actions**".

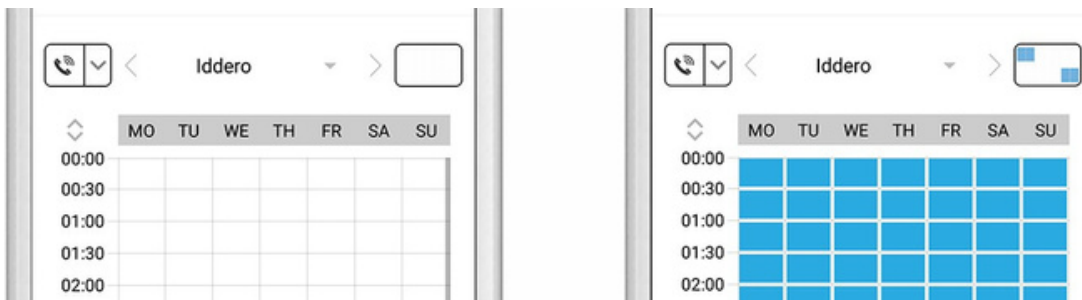
In this screen, tap the bell symbol in the upper-left corner, select "SIP call" and fill out the schedule per your requirements for this event.

C) For all devices outfitted with a digital display module (e.g. D21DKV), find the corresponding settings in the DoorBird App administration menu **KEYPAD** when selecting "Settings".

Select or create a new PIN code. Under **VALIDATION** select "Schedule for actions".

In this screen, tap the bell symbol in the upper-left corner, select "SIP calls" and fill out the schedule per your requirements for this event.

Hint: by tapping the button in the upper right corner it is possible to fill or clear the entire schedule.



6. Return to the main administration area and save the settings. Wait for about five minutes for the new settings to take place.

Note: For questions and problems regarding the product “Iddero HC3 touch panel” please contact the manufacturer online: <https://iddero.com/en/contact>

Note: For questions and problems regarding our devices (DoorBird IP Video Door Station) please use the contact form to get In touch with our technical support: <https://www.doorbird.com/contact>

FIRMWARE INFORMATION

This manual was tested using the following versions:

1. Iddero touch panel

Hardware device series: HC3-KNX, HC3L-KNX

Software version: 4.6

2. DoorBird IP Video Door Station

Hardware device series: D2101V

Software Version: 000141

Hardware device series: D101S

Software Version: 000141