



Integration Note

Manufacturer:	Bird Home Automation GmbH
Model Number(s):	DoorBird D10x, D11x, D20x, D21x
Comments:	DoorBird Firmware 000134 (000132 for D11x series) and greater
Document Revision Date:	06/22/2022

OVERVIEW AND SUPPORTED FEATURES

The DoorBird D10x, D11x, D20x and D21x Door Stations are SIP Door Station solutions with an integrated video camera for monitoring door activity. ELAN integration with the station supports the following features:

1. **Paging-** When the “Call” button is pressed on the Door Station, it will call all appropriate Intercom Stations based on the House Mode of the ELAN System
2. **2 Way Calls-** A user at an Intercom Station can converse with the person who pressed the “Call” button
3. **Video Monitoring-** The camera in the Door Station may be accessed from any Intercom Station to view the caller
4. **Relay/Door Strike Actuation through UI -** Requires ELAN version 7.3 or newer.

INTEGRATION REQUIREMENTS

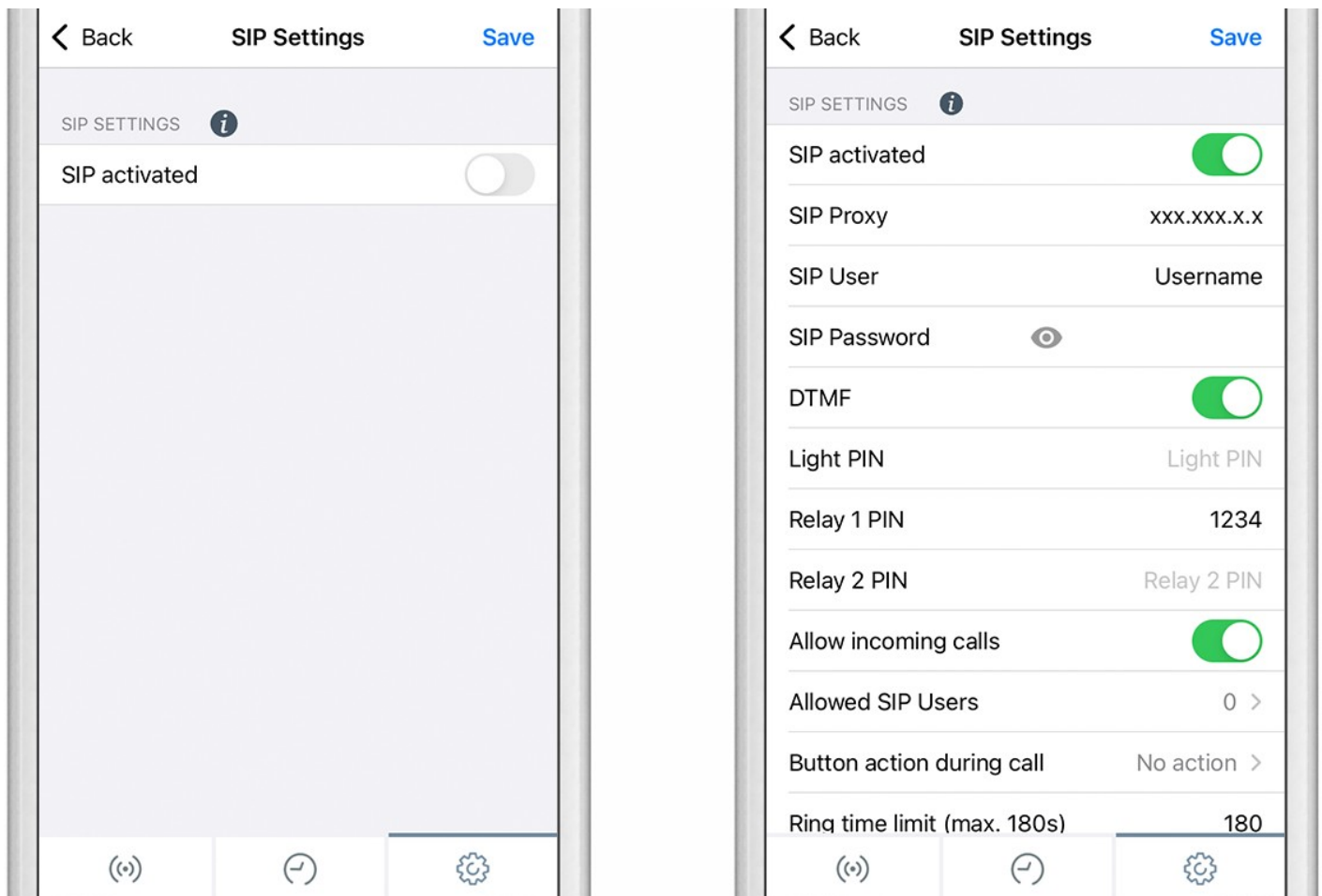
The DoorBird Door Stations require a single CAT5 or CAT6 Ethernet connection to the same network to which the ELAN Intercom Controller is attached. The station may be powered either using PoE (Mode A) or with the separate 15VDC power supply included with the unit:

- ❖ Pull the CAT5 or CAT6 cable from the door station location to the Network Switch or Router
- ❖ Terminate both ends of the cable
- ❖ Test the cable to ensure proper performance
- ❖ Connect the Door Station; ensure that it powers up.

COMPONENT SETUP

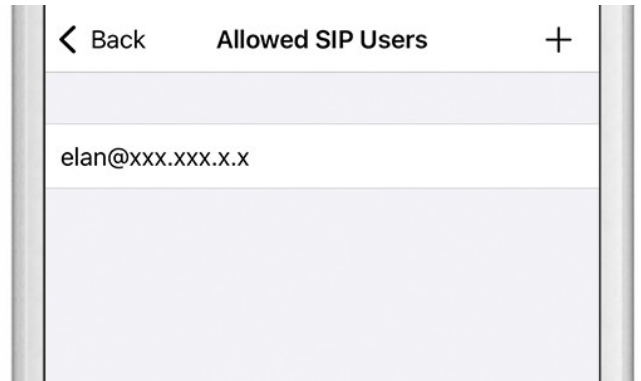
SIP VoIP:

1. Install the DoorBird app on your iOS or Android device.
2. Set Up the DoorBird device following DoorBird documentation, if you do not have the DoorBird setup guide you can find it here <http://www.doorbird.com/support>.
3. Once you have set up your account and device navigate to the administration page under further functionality.
4. Enter the login credentials you used to set up the account and hit continue.
5. Once in the administration menu scroll to the bottom and select the SIP Settings button.
6. The SIP Setting menu should look like the picture below.

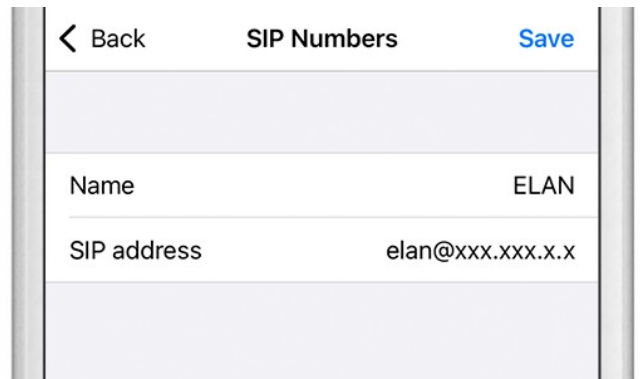


7. For the SIP Proxy you will enter the IP address of your ELAN controller.
8. For the SIP User and SIP Password you will enter the information given by DoorBird for the door station you want to use.
10. Make sure DTMF is turned on for use of DoorBird relay.

11. Relay 1 Pin is the code that you input to activate the relay.
12. Make sure Allow incoming calls is turned on.
13. For allowed SIP Users you will enter **elan@xxx.xxx.x.x** where **xxx.xxx.x.x** is the IP address of your ELAN controller, and then hit the save button in the top right.



14. Go back to the main administration area and tap on **"SIP Calls"**, then tap **"Add"**.
15. In the subsequent screen, enter an arbitrary name in the **"Name"** field, e.g. **"ELAN"**. For the SIP address, enter **elan@xxx.xxx.x.x** where **xxx.xxx.x.x** is the IP address of your ELAN controller.



Doorbird has a schedule feature built into their Door Station to allow you to create custom schedules for Push Notifications, SIP Calls, and Relay Access. The schedule is located on the Administration page. To have SIP Functionality and Relay Access through ELAN, these schedules need to be enabled. By default, the schedules are turned off for SIP and Relay Access. Depending on the model of the DoorBird IP Video Door Station, choose one of the following options to find the schedule settings:

- A) For all devices with a single door chime (e.g. D10x, D11x, D20x, D2101V etc.) find the settings in question under **“Schedule for doorbell”**. From this screen, tap the bell symbol in the upper left corner, Choose **“SIP call”** and fill out the schedule per your requirements.
- B) For all devices with multiple door chimes (e.g. D2102V, D2103V, etc.) find the settings in question in the administration area under **“Key Configuration”** from the settings menu. Select the appropriate button and tap **“Schedule for actions”**. From this screen, tap the bell symbol in the upper left corner, choose **“SIP call”** and fill out the schedule per your requirements.
- C) For all devices outfitted with a keypad (e.g. D21DKV) find the settings in question in the administration area under **“Keypad”** in the settings menu. Select the appropriate key combination and go to **“Schedule for actions”**. From this screen, tap the bell symbol in the upper left corner, choose **“SIP call”** and fill out the schedule per your requirements.

1. Once you open the “Schedules for doorbell” page, you will be presented with the image below.
2. Select the dropdown in the top left of the page and find the option for “SIP call”
3. Press the Blue button on the top Right to activate the whole schedule for “SIP call”



4. Click the Back button at the very top left of the app
5. On the Administration page, click “Save” on the very top right.

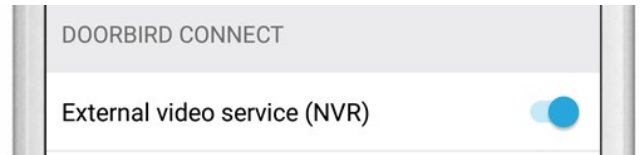
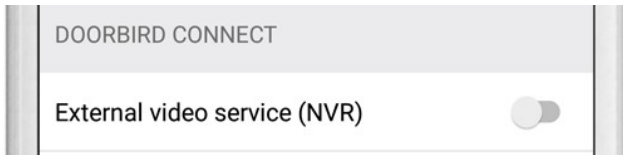
ELAN CONFIGURATION DETAILS

CONFIGURE THE BUILT-IN CAMERA

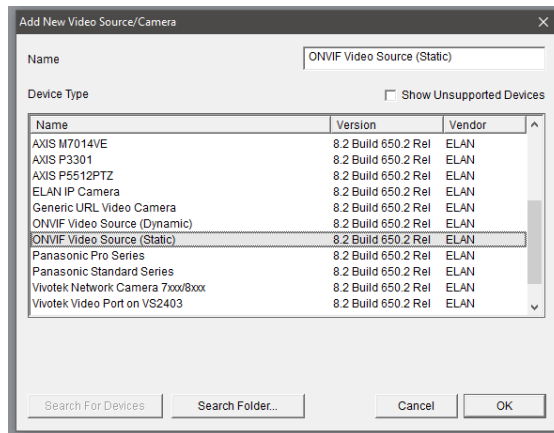
There are two options through which the DoorBird's built-in camera may be added into ELAN: Using the "NVR" setting of the DoorBird or by adding a generic camera device in G!Tools. The latter method should be utilized if the former causes any issues.

NVR method:

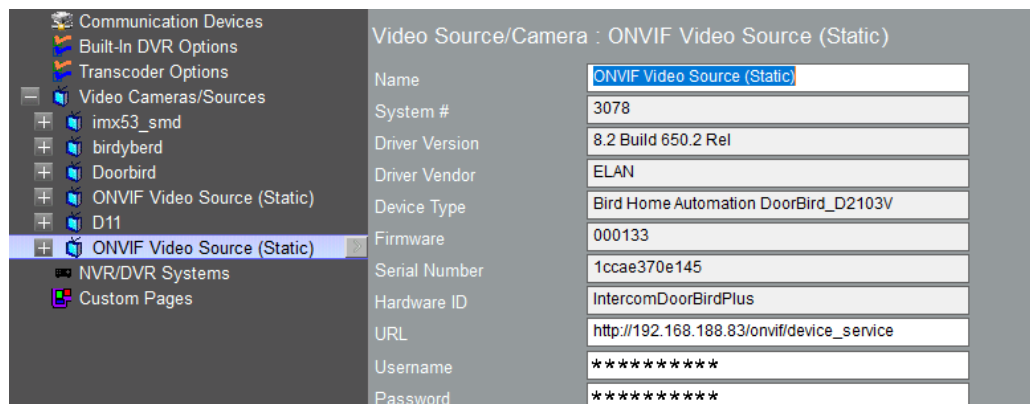
1. Open the administration page of the DoorBird app.
2. Scroll down to the "DOORBIRD CONNECT" section and enable the "External video service (NVR)" switch.



3. Click on "Save" in the top right corner to store the changes.
4. Back in G!Tools, select the Video tab in Configurator, right click "Video Cameras/Sources and select "Add New Video Source/Camera".
5. Select "ONVIF Video Source (Static)" from the Device Type list.



6. Change the name of the Camera to DoorBird Camera to make it easily distinguished from other video sources.
7. In the URL Field, replace the pre-configured IP address with the IP address of you DoorBird.
8. Enter the DoorBird UserName and Password for the SIP user created earlier in the process using the DoorBird app.



ELAN CONFIGURATION DETAILS

CONFIGURE THE BUILT-IN CAMERA

Generic URL Video Camera method.

1. On the Video tab in Configurator, Right click "Video Cameras/Sources and select "Add New Video Source/Camera".

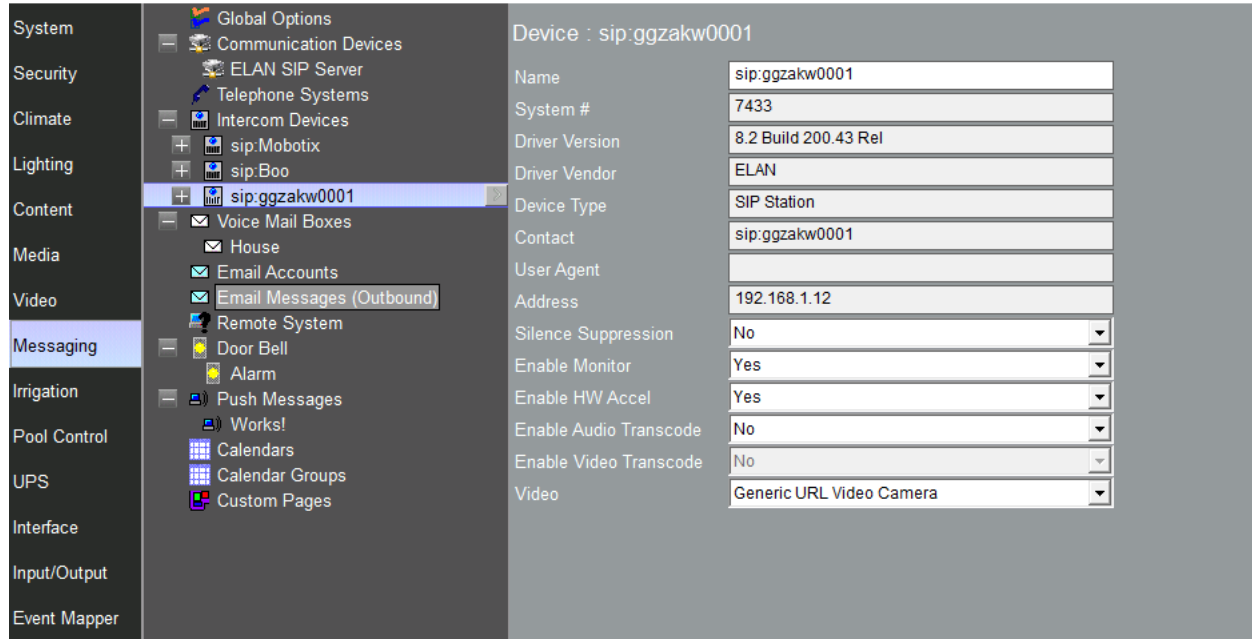
The screenshot displays the ELAN Configurator interface. On the left is a tree view with the following items: Communication Devices, Built-In DVR Options, Transcoder Options, Video Cameras/Sources (expanded), TP7 F8:57:2E:00:25:55, TP12 F8:57:2E:02:10:35, Generic URL Video Camera, KNC-HDi47, Panasonic Standard Series, Generic URL Video Camera (selected), DVR Systems, Custom Pages, and New Page. The main area is titled "Video Source/Camera : Generic URL Video Camera" and contains the following configuration fields:

Name	Generic URL Video Camera
System #	7417
Driver Version	8.2 Build 200.40 Rel
Driver Vendor	ELAN
Device Type	Generic URL Video Camera
URL	/bha-api/video.cgi
IP Address	192 . 168 . 1 . 12
Port	80
UserName	*****
Password	*****
Flip Image 180	No
Hide Full Screen Control	No
Hide Resolution Control	No
Default Resolution	Auto
Enable DVR	No
Enable Transcoder	No
Transcoder Res	< SELECT >
Record Resolution	< SELECT >
Record Mode	Auto (Medium Sensitivity)
Record Threshold	0%
Minimum Rate	1/60sec

2. Select "Generic URL Video Camera" from the Device Type list.
3. Change the name of the Camera to DoorBird Camera to make it easily distinguished from other video sources.
4. In the URL Field, enter the following URL for the MJPEG Video Stream provided by the door station: /bha-api/video.cgi
5. Enter the LAN IP Address of the DoorBird in the IP Address field.
6. Enter the DoorBird UserName and Password for the SIP user created earlier in the process using the DoorBird app.

CONFIGURE THE DOOR STATION

1. Once you add an ELAN SIP Server under the communication devices, the DoorBird Device should automatically add with correct IP address.
2. Change the name of this door station to accurately reflect where it is located.
3. Select the generic URL video camera, created above, in the video drop down to have the door stations camera enabled.



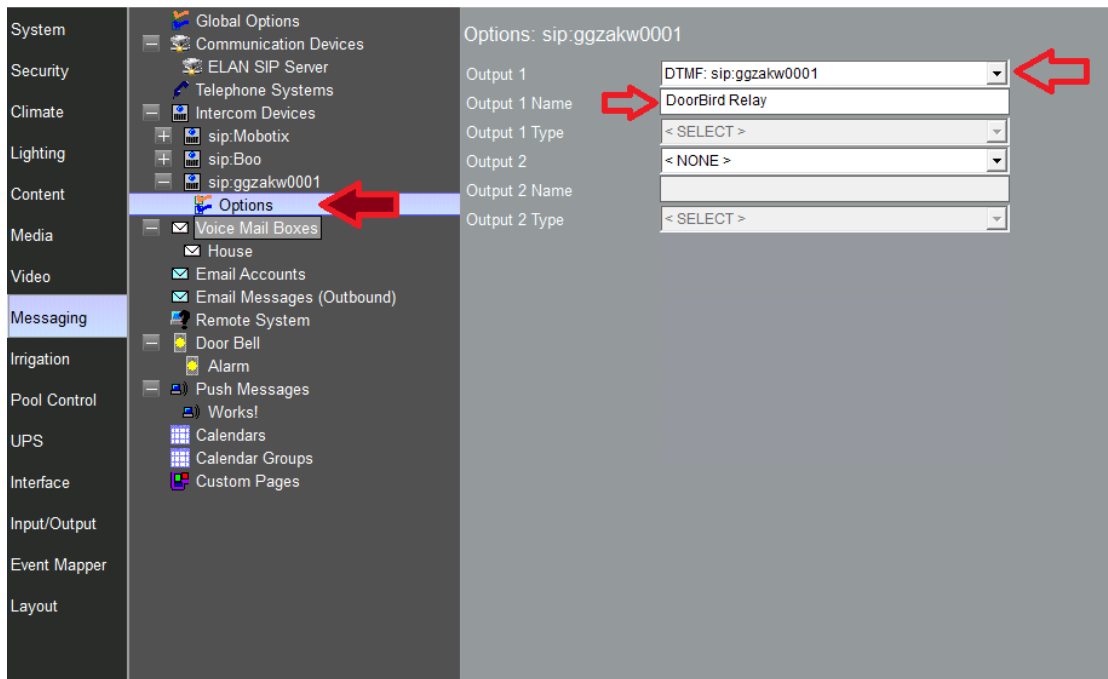
Device : sip:ggzakw0001

Name	sip:ggzakw0001
System #	7433
Driver Version	8.2 Build 200.43 Rel
Driver Vendor	ELAN
Device Type	SIP Station
Contact	sip:ggzakw0001
User Agent	
Address	192.168.1.12
Silence Suppression	No
Enable Monitor	Yes
Enable HW Accel	Yes
Enable Audio Transcode	No
Enable Video Transcode	No
Video	Generic URL Video Camera

Note* You may need to refresh the messaging tab before the DoorBird appears.

CONFIGURE THE RELAY(OPTIONAL)

If your DoorBird has relays, you can set them up under the options of the door station in the messaging tab shown below.



You have the option of selecting relays on the ELAN controller or from the door station itself.

1. To use the relay from the door station you will want to choose the DTMF option at the bottom of the list with the name of the doorstation afterwards (example in picture above).
2. The Output 1 Name will be what the relay button displays as on the UI.
3. Once you press the relay button in the call a popup keypad where you enter the relay pin that was set in the SIP settings page (setup above).
4. For this to work you must press the pound symbol (#) after entering the code for the relay to activate (For example if your relay code is 1234 you will enter 1234 then hit #).



Common Mistakes

1. No Video. If there is no video for the door station in the viewer, ensure that the Video drop-down for the Door Station on the Messaging tab has the generic URL video camera selected.
2. Door Station not populating in the Viewer. Make sure that the Door Station has populated on the Messaging tab in Configurator. Check the settings in the DoorBird app to make sure the ELAN Controller is assigned as the SIP Proxy.
3. No Page signal sent when button is pressed. Ensure that the Dial Plans are set up correctly and the system is in the correct System Mode for the Dial Plan. See the Intercom Integration Note for details on setting up Dial Plans.

Additionally, if a SIP call comes in to the ELAN system and is not answered, the DoorBird will continue to hold the SIP session open for a period of 210 seconds before timing out. During this 3.5 minute period, the DoorBird will be unable to initiate another SIP call to the ELAN Controller. Once the SIP session has timed out on the DoorBird, you will be able to ring the bell and receive the page signal on the ELAN controller

Please note that DoorBird firmware revision 000110 has a problem where a single call from the DoorBird will work, but then no further calls will go through until the DoorBird is rebooted. Contact DoorBird to request a firmware update, or go to <http://www.doorbird.com/rpfu>

4. Cannot monitor the door station. Ensure that the ELAN controller's IP address is added under Allowed SIP Users.
5. DoorBird Relay not activating.
 - a. Confirm that the DoorBird's DTMF relay is set up under the door station.
 - b. Confirm that the DTMF setting is active in the SIP settings.
 - c. Confirm that you are using the correct pin which can be found and changed in the SIP settings.
 - d. Make sure you are pressing the # symbol after entering the code.
6. Not Activating the Schedules within Doorbird's App for Relay Access and SIP Calls.