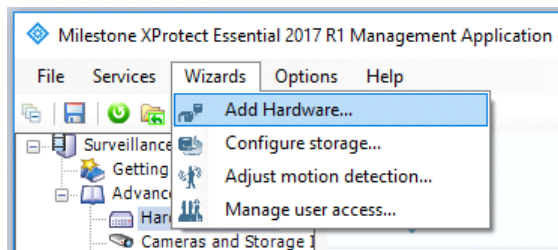
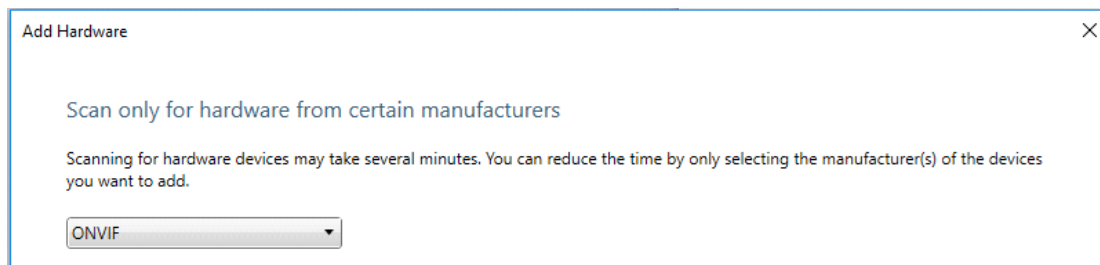


# Milestone XProtect® Essential integration with DoorBird IP Video Door Station

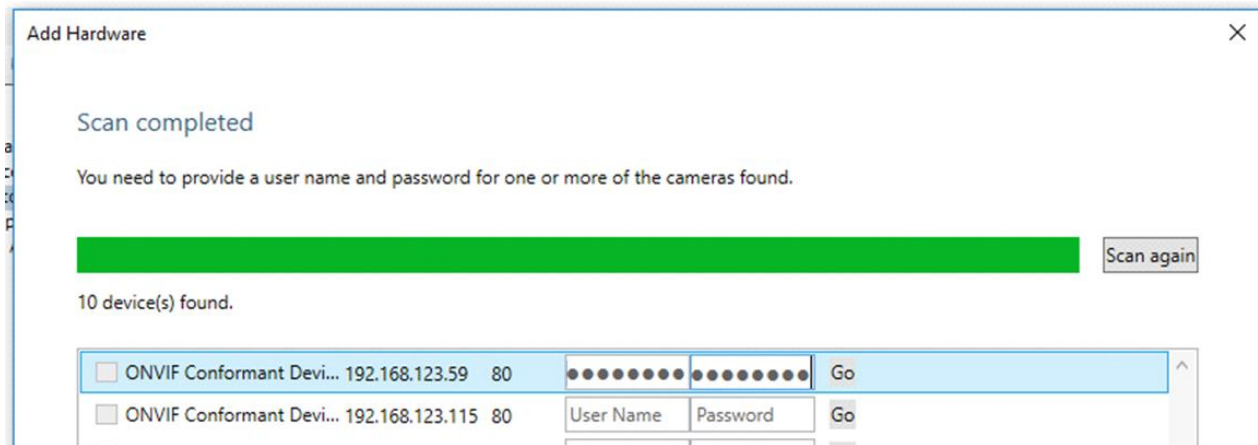
- 1) Open up the *Milestone XProtect Management Application*.
- 2) Go to *Wizards->Add Hardware*.



- 3) Select *Scan for hardware*.
- 4) Leave the *Scan local network* check-box checked and press the *Next* button.
- 5) In the next window, select scanning for *ONVIF* devices only.



- 6) After the scan is completed, you shall be able to find your DoorBird station in the results list. Enter the username and password of the DoorBird IP Video Door Station (important: not the Administrator), see e.g. the document „Digital Passport” of the DoorBird IP Video Door Station and click on the *Go*-button.



7) Finally click **Next** to finish the device set up procedure.

The DoorBird IP Video Door Station is now ready for use.

