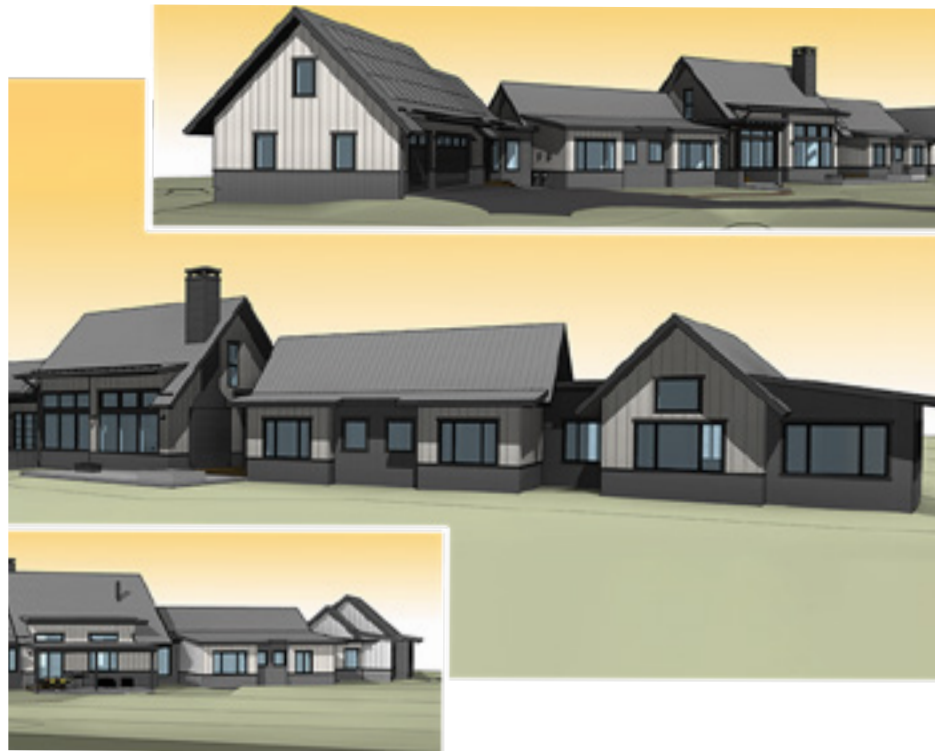




PROBUILDER IDEAHOMES
PANORAMA HOUSE

REQUIREMENTS

- ✓ Tenant-friendly / Ease of Use
- ✓ No subscriptions fee
- ✓ Adding value to property
- ✓ Longevity
- ✓ Custom Design



OVERVIEW

The Panorama Home is a 6,160 square-foot custom retreat in Breckenridge, Colorado.

Presented in a Modern Farmhouse style on a two-acre lot, the home is designed and engineered to achieve carbon neutrality, net-zero energy use, indoor comfort and health, and a high degree of resiliency for its mountain climate. Thrive Home Builders will leverage multiple building science best practices, innovative equipment, and off-site construction methods to speed production, reduce waste and labor, and fulfill the home's lofty but attainable performance goals. > [watch the video](#)

- Single level, 6,160 ft²
- Six bedrooms, Eight bathrooms
- Open floor plan concept
- WFH opportunities
- Ample outdoor living spaces
- Three-car garage
- Completion Date: Fall 2023

DOORBIRD - THE SOLUTION

FEATURES

- ✓ WiFi / LAN connection (PoE capable)
- ✓ Individual PIN codes
- ✓ Configurable via App

Gene Myers, Chief Executive Officer at Thrive Home Builders, was searching for a sustainable and durable access solution. A design that complements the style of the home and the elements and materials of the surrounding mountains and National Forest.

DoorBird products to be installed:

- IP Video Door Station D1101KV
- IP Video Indoor Station A1101, one will get installed in the living area/kitchen and another one near the master suite
- Access control device A1121, added to garage

All DoorBird devices will be stainless steel and in Graphite black (Raven Polar) to match the other hardware appliances.



PARTNER:

- > [Thrive Home Builders](#)
- > [Professional Builder Magazine](#)
- > [Panorama House web page](#)

