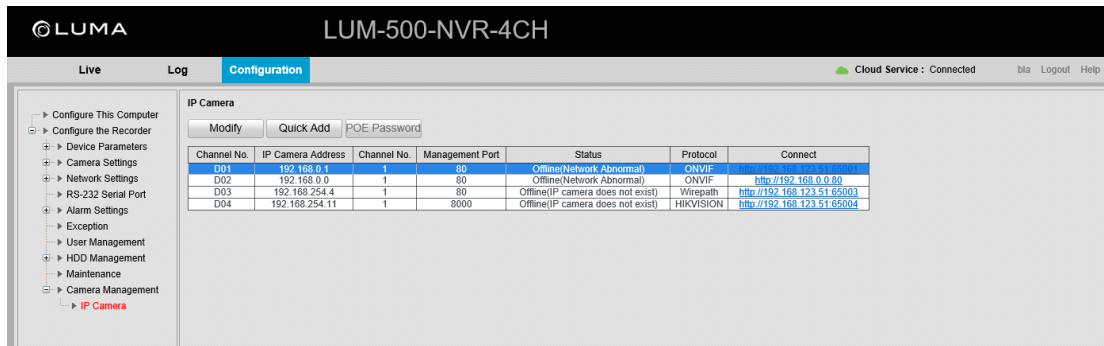
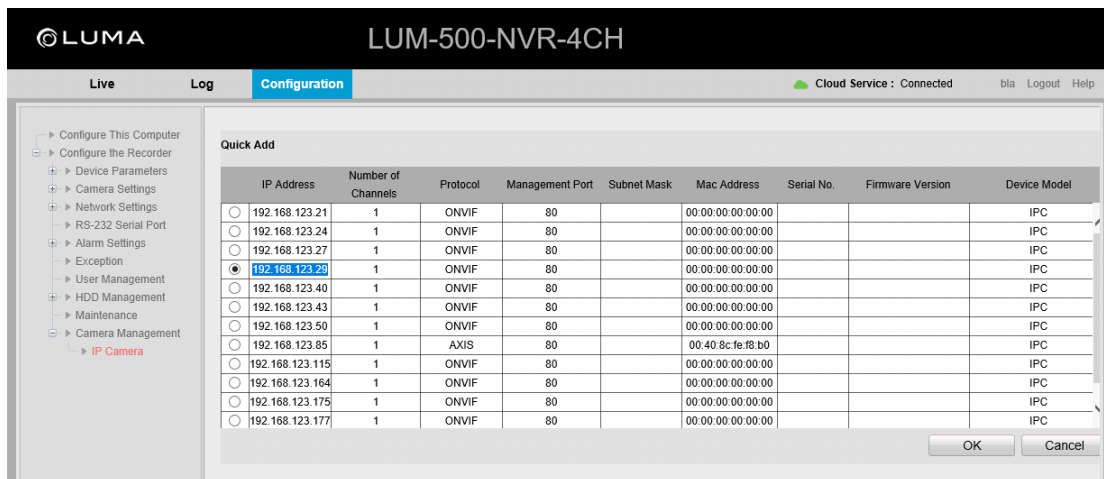


Luma NVR integration with DoorBird IP Video Door Station

1. Log into LUMA's user interface and go to the **Settings** page.
2. In the navigation menu on the left hand side expand the entry **Camera Management** and select **IP Camera**.

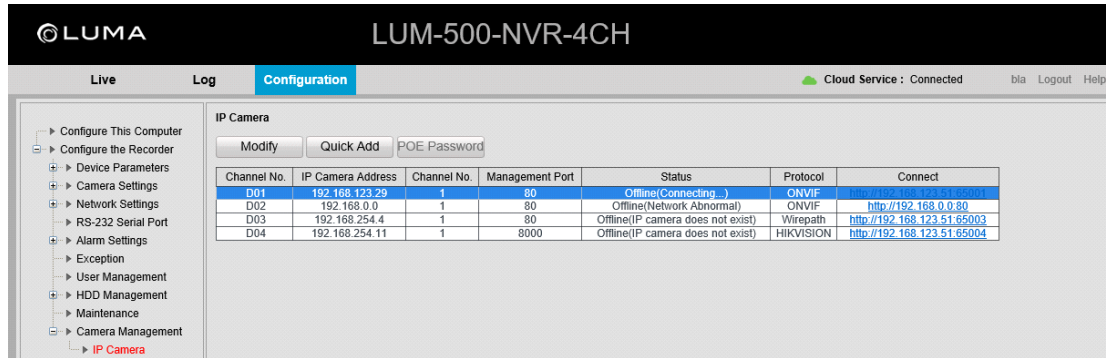


3. Press the **Quick Add** button to locate the IP address of your DoorBird IP Video Station.
4. Locate your DoorBird IP Video Station in the list of results, mark the radio button next to it and press **OK**.

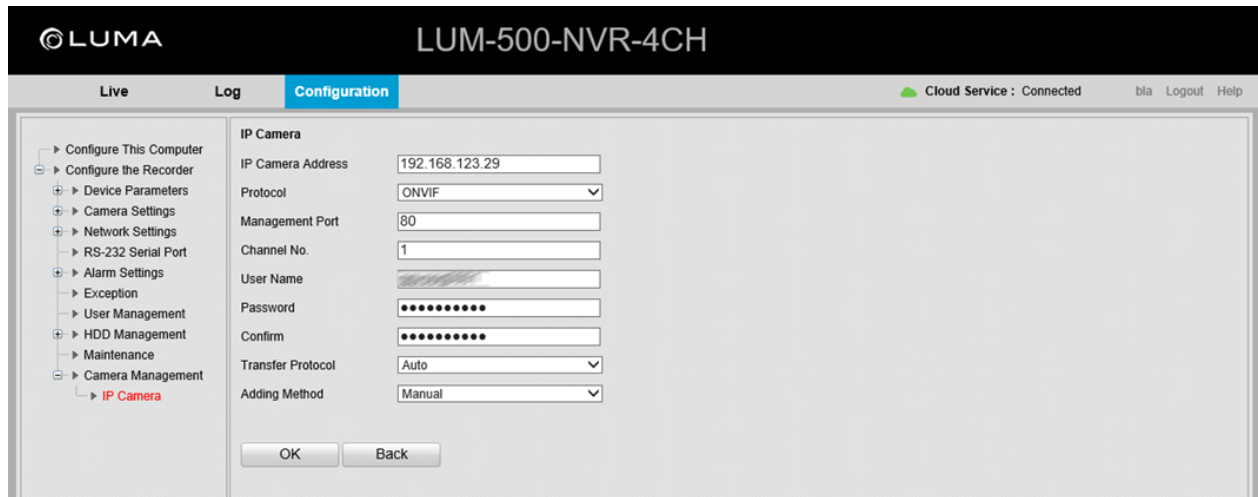


5. In the next window select the desired channel and press **OK** again.

6. Now select the newly added DoorBird IP Video Station from the list and press **Modify**.



7. Enter the username and password of the DoorBird IP Video Door Station (important: not the Administrator), see e.g. the document „Digital Passport” of the DoorBird IP Video Door Station. Then press **OK**.



8. Your DoorBird IP Video Doors Station is set up and ready for use.

