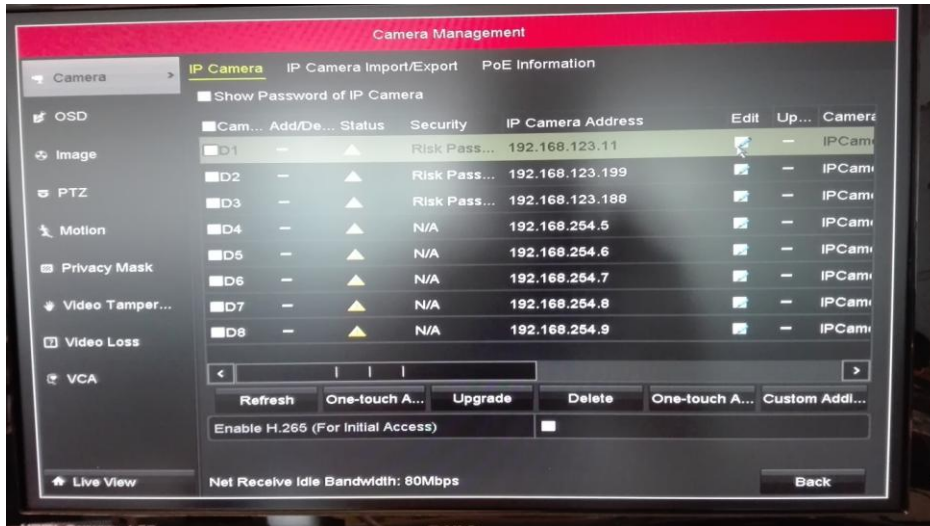
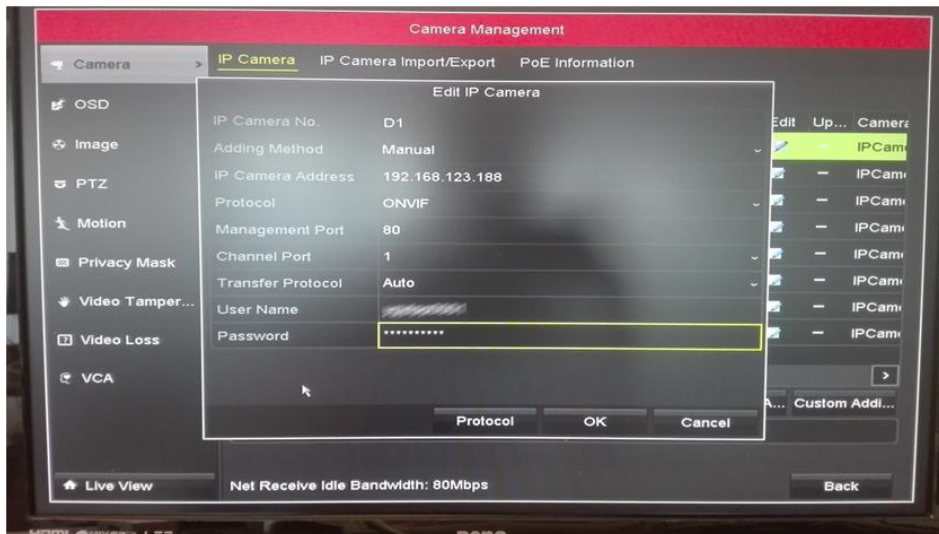


## HIKVISION Integration

1. Go to Menu->Camera. You will see a list of pre-programmed cameras.



2. Click on your preferred channel->Edit. A following window will appear



IP Camera Address: Enter the LAN IP address of your DoorBird IP Video Door Station.

Protocol: ONVIF

Management Port: 80

Transfer Protocol: Auto

User Name and password: Enter the user credentials from your DoorBird IP Video Door Station Digital Passport.

3. Once you have entered all the information, click on OK. Go Back to the Main screen, you should now be able to see the live view of your DoorBird IP Video Door Station.