

SYSTEM REQUIREMENTS

- DoorBird IP Video Door Station D10x/D11x/D20x/D21x-Series
- Vivotek Network Video Recorder

ADDITIONAL INFORMATION

The following guide will take you through the steps of setting up a DoorBird IP Video Door Station in connection with a Vivotek Network Video Recorder.

Please make sure that the Vivotek Network Video Recorder receives an IP address and is connected to the same local network your DoorBird IP Video Door Station is connected to. Please also make sure that your DoorBird is online, using this service:

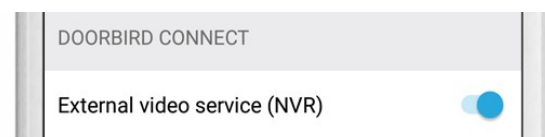
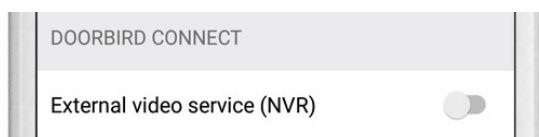
<https://www.doorbird.com/checkonline>

The local IP address of your DoorBird is available from the same page.

1. SETTING UP THE DOORBIRD IP VIDEO DOOR STATION

For the DoorBird IP Video Door Station to be properly recognized by the Vivotek Network Video Recorder, the “NVR”-setting of the DoorBird IP Video Door Station must be activated.

1. Open the DoorBird App and log in to the administration area under “Settings → Administration” using the administrator user and password credentials from the “DIGITAL PASSPORT” document that was shipped with your DoorBird IP Video Door Station.
2. Find the “External video service (NVR)” toggle under “DOORBIRD CONNECT” from the main menu and switch it on.

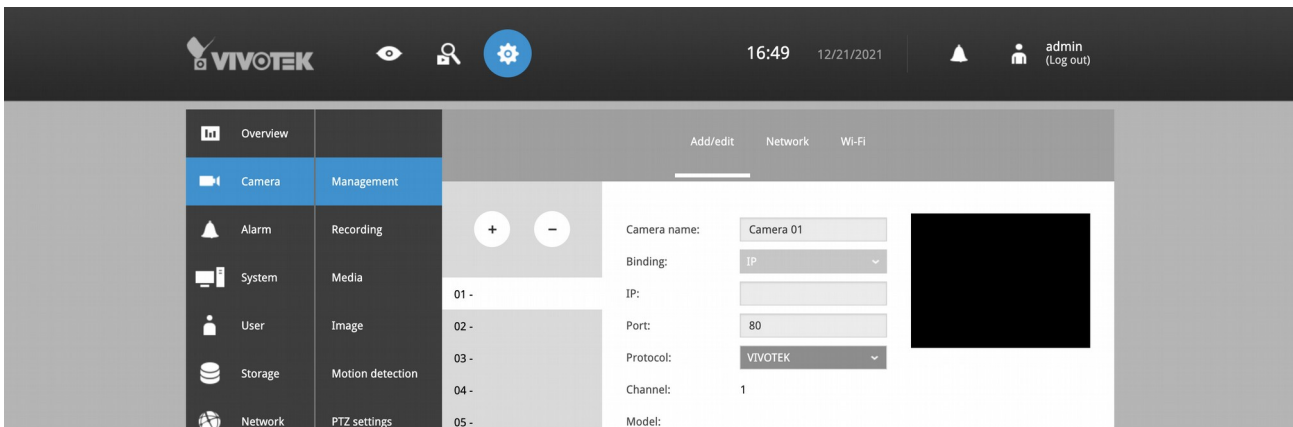


2. SETTING UP THE VIVOTEK NETWORK VIDEO RECORDER

To make use of the DoorBird IP Video Door Station's camera inside the Vivotek Network Video Recorder, it needs to be added and configured within the Vivotek Web Interface.

1. Open the Vivotek web Interface by typing the IP address of the Vivotek Network Video Recorder into the address field of your browser.
2. Log into the interface using your admin credentials for the Vivotek Network Video Recorder.

- On the main screen, click on “Camera” and navigate to the “Management” section.



- Select an empty device from the list and in the right-hand section enter the following values:

Camera Name: A descriptive name for your DoorBird IP Video Door Station, e.g. “Front Door”.

Binding: IP.

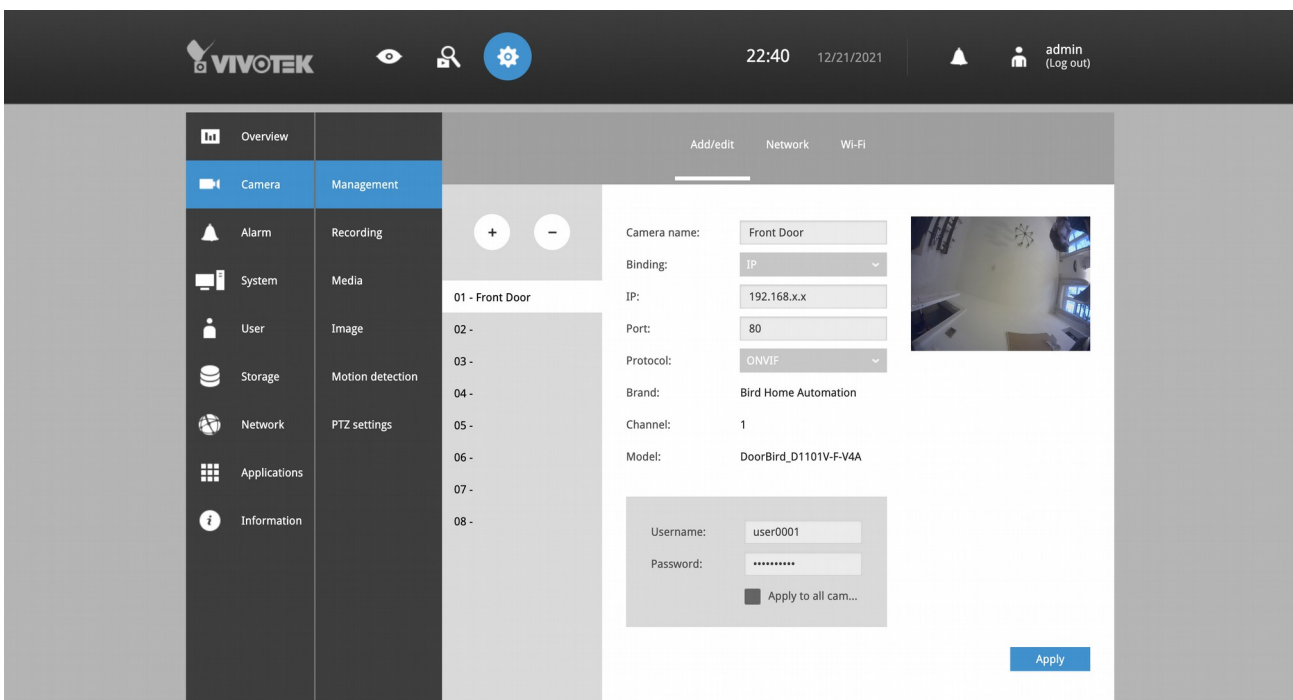
IP: The IP address of your DoorBird IP Door Station.

Protocol: ONVIF.

- In the gray area below, enter the following:

Username: The user name of your DoorBird IP Video Door Station as found on the left hand side of your DoorBird’s DIGITAL PASSPORT document.

Password: The respective password belonging to your DoorBird IP Video Door Station’s username.



- Click “Apply” to store the settings. If everything was entered correctly, the box on the left will show a preview image of your DoorBird IP Video Door Station’s camera feed

For questions and problems regarding the product “Vivotek Network Video Recorder” please contact the manufacturer online: <https://www.vivotek.com/support>

For questions and problems regarding our devices (DoorBird IP Video Door Station) please use the contact for to get In touch with our technical support: <https://www.doorbird.com/contact>