

SYSTEM REQUIREMENTS

- DoorBird IP Video Door Station D10x/D11x/D21x Series.
- IP Telephone (Yealink T58).
- Starface Cloud access.

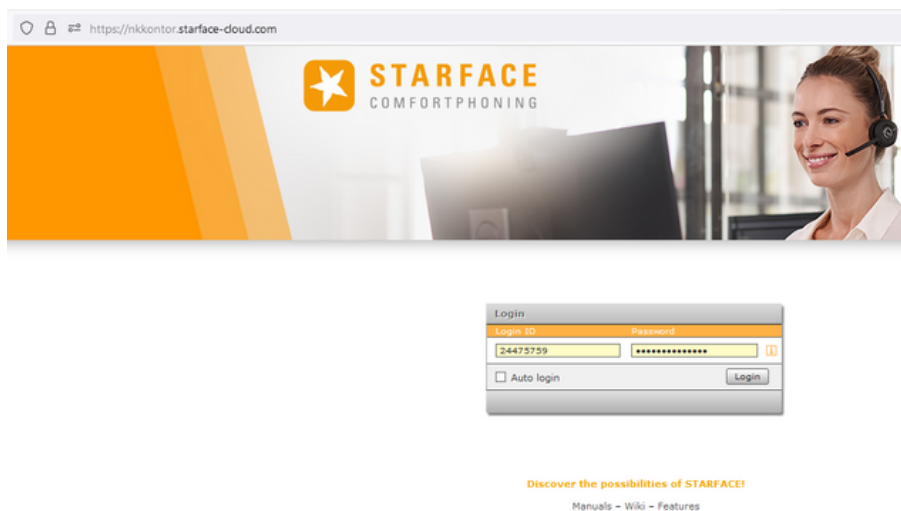
ADDITIONAL INFORMATION

The following guide will take you through the steps of setting up a DoorBird IP Video Door Station in connection with IP Telephone Yealink T58. Please make sure that the Yealink T58 device receives an IP address. Please also make sure that your DoorBird is online using this service: <https://www.doorbird.com/checkonline>

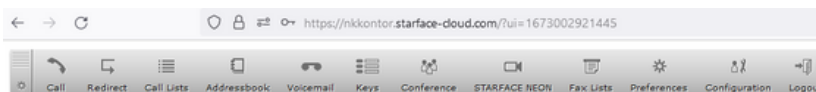
- DoorBird will communicate with Yealink through SIP Call using cloud service.
- During the call you can enable the DTMF to Open Door/Trigger Relay.

1. SETTING UP THE STARFACE CLOUD CONFIGURATION

1.1 Login to the nkkontor.starface-cloud.com portal using your cloud service ID and Password on browser(Firefox/Chrome).

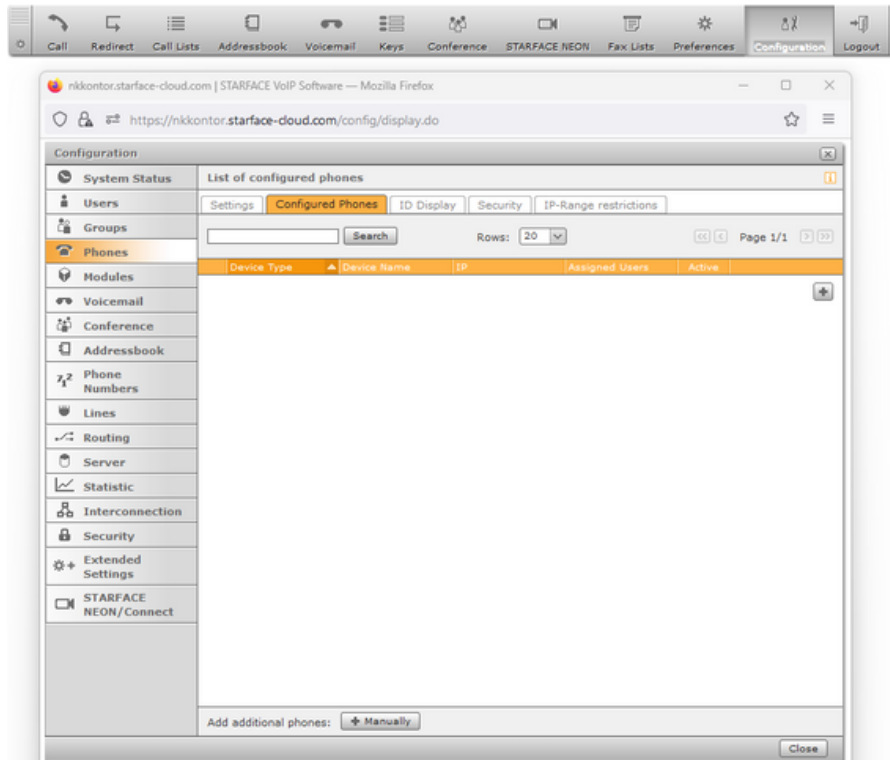


1.2 After Logging into the portal successfully. Double tap on Configuration icon the Configuration window will pop-up.



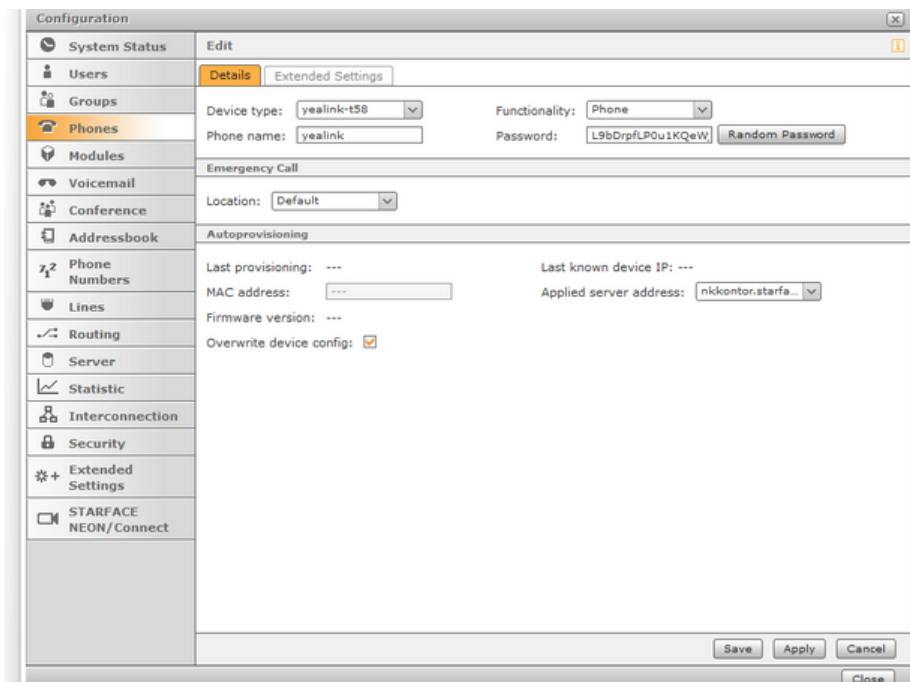
Note: In this Integration guide we used Yealink-T58 as example for an IP Telephone.

1.3 In the phones section, Click on "+" symbol to add the Yealink IP Telephone details.



1.4 Device type: Choose the Yealink IP telephone series. Give a Phone name and choose one random password.

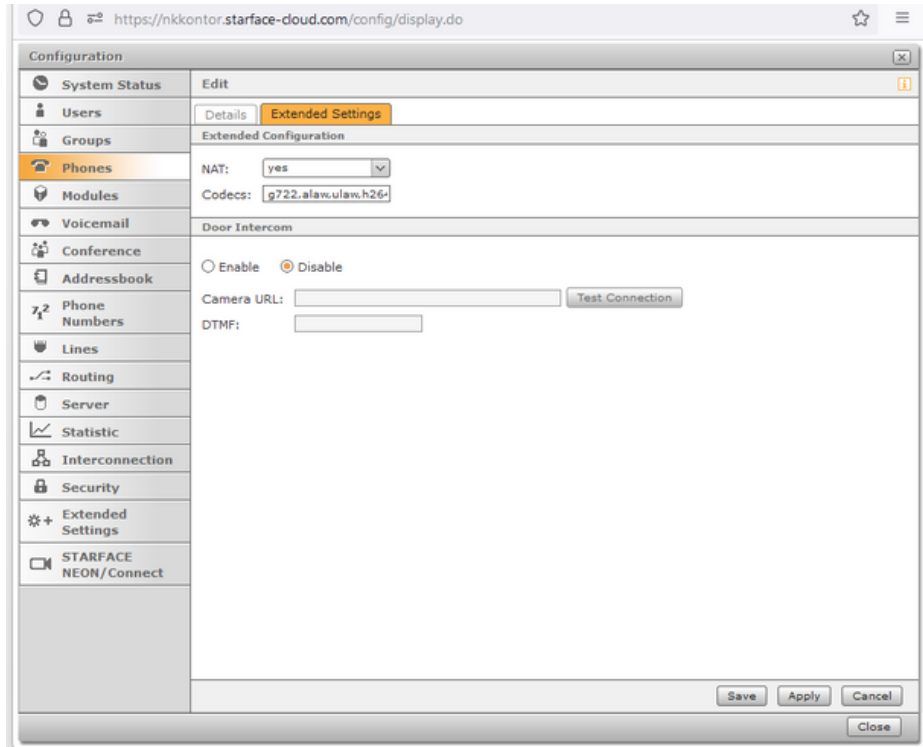
1.5 Choose Applied server address : nkkontor.starface-cloud.com.
Enable Overwrite device config.



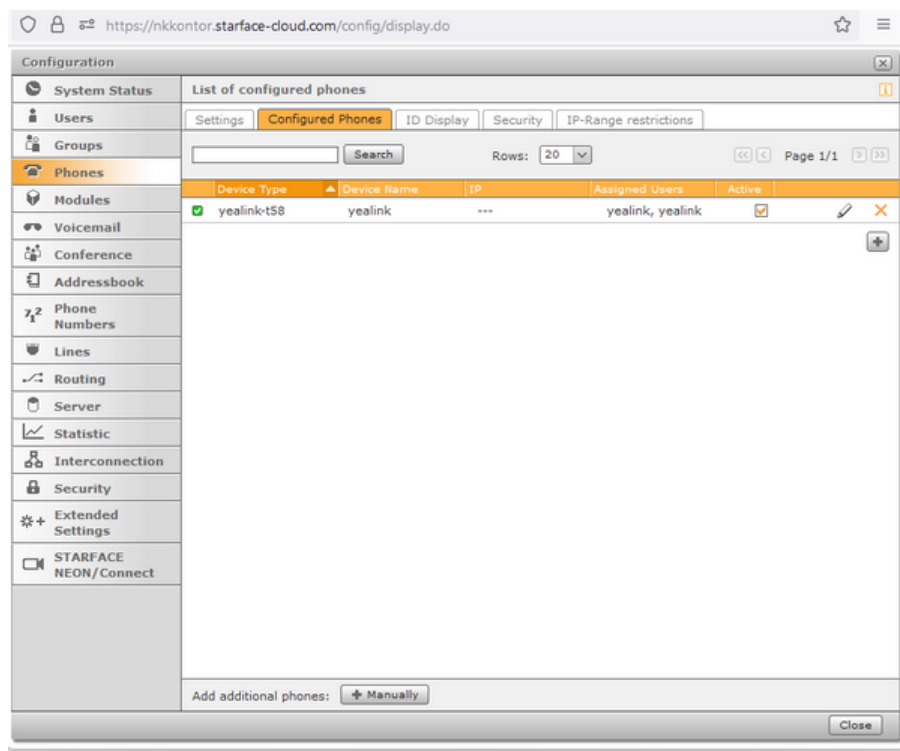
Note: Please enter the above phone name and password in the Username and Password for the Yealink Account registration settings(Section 3.3).

1.6 In the same window click on Extended settings.

1.7 Choose NAT-->Yes, Codecs--> g722,alaw,ulaw,h264.



1.8 Click on Apply, then Click on save.



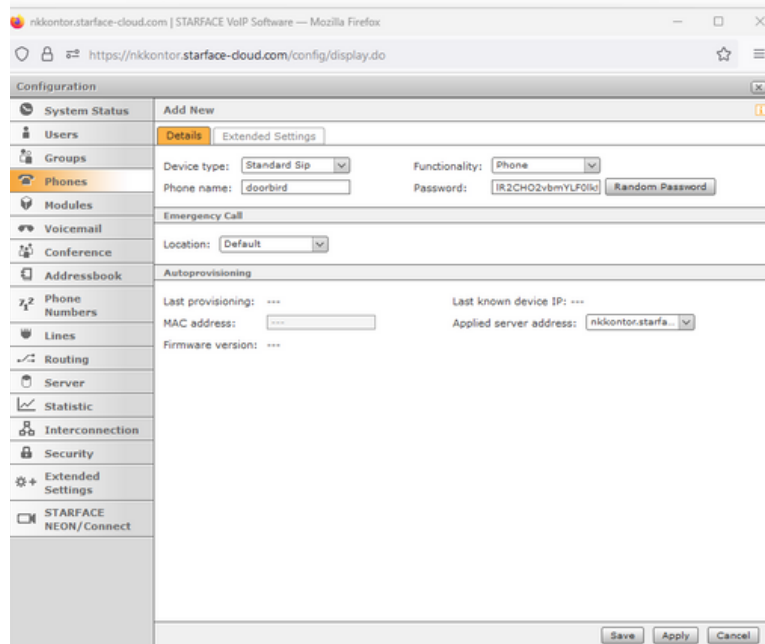
1.9 Click on "+" symbol to add the DoorBird details.

Note: Here DoorBird is added in the Phones because it Performs SIP phone functionality.

1.10 Device type: Standard Sip.

Give a Phone name and choose one random password.

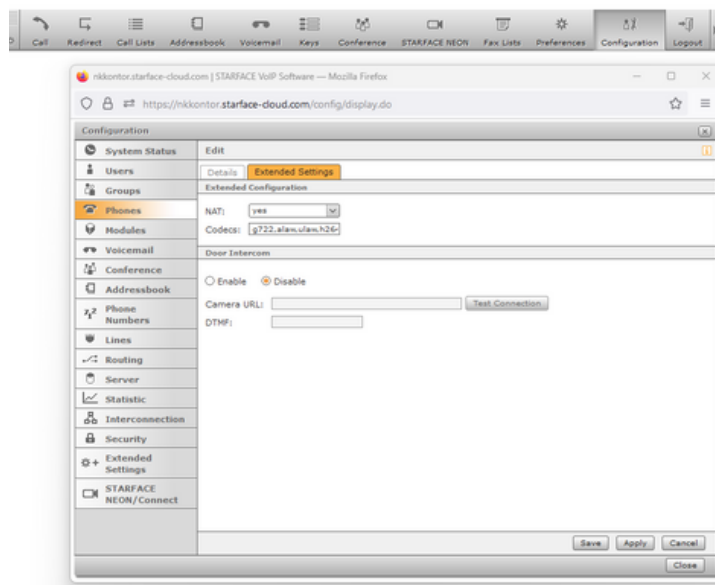
Applied server address : nkkontor.starface-cloud.com




Note: Please use the same Phone name & Password in the DoorBird App (SIP User & Password of the SIP settings in Section 4.2).

1.11 In the Extended Settings.

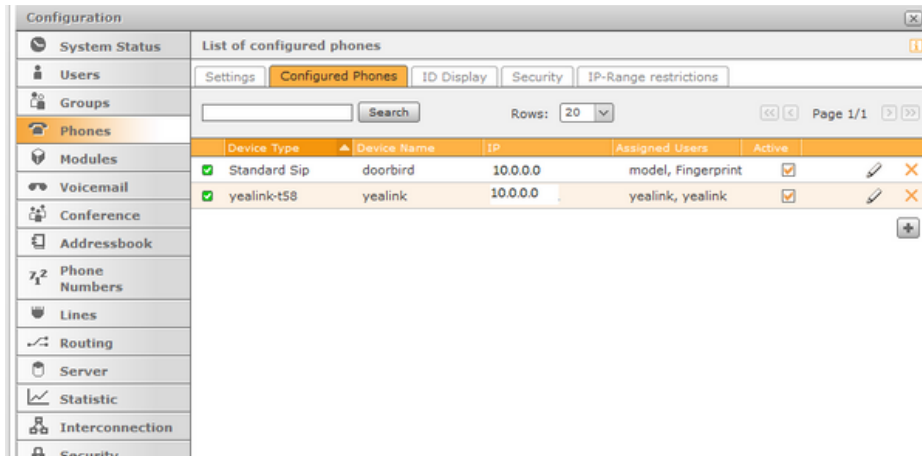
Choose NAT: Yes and Codecs : g722,alaw,ulaw,h264



Note: Its not necessary to enter the Camera URL and DTMF, this will be enabled in the SIP settings of DoorBird app.

1.12 Click on Apply, then click on Save. You will get the added phones as below.
 You can edit the details by clicking on edit symbol .

Note: You will get the Green tick only after completion of the Yealink and DoorBird Settings please follow all the below configuration steps.



2. USER REGISTRATION TO ADD INTERNAL PHONE NUMBERS

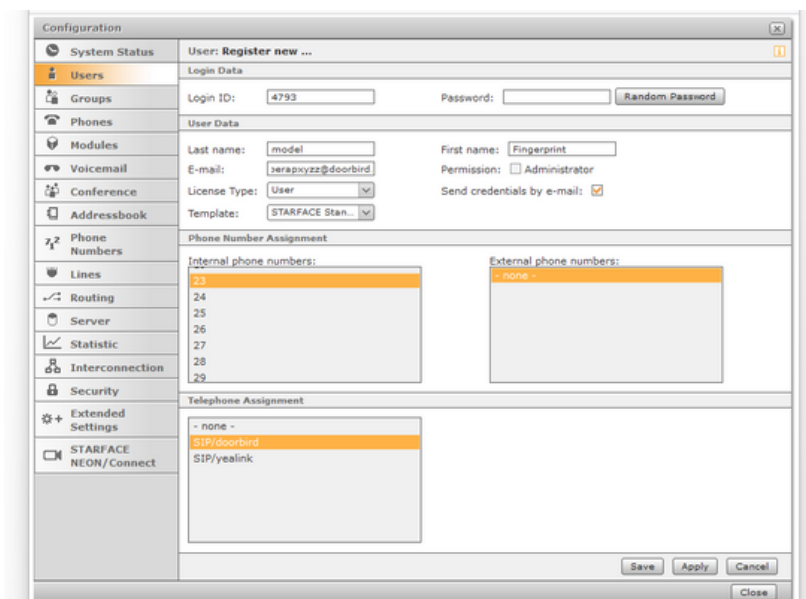
2.1 Go to Users section. Click on New User.

2.2 In Login Data, Login ID will automatically generates, choose one Random Password.
 In User Data, Give First name, Last name, email-id, License Type--> User, Template-->STARFACE Standard.

2.3 Choose one internal phone number of your choice from 11 to 99.

2.4 Choose Telephone Assignment as SIP/doorbird (configured DoorBird in Step 1.10).

Note: All the configured Phones will be available in the Telephone Assignment.

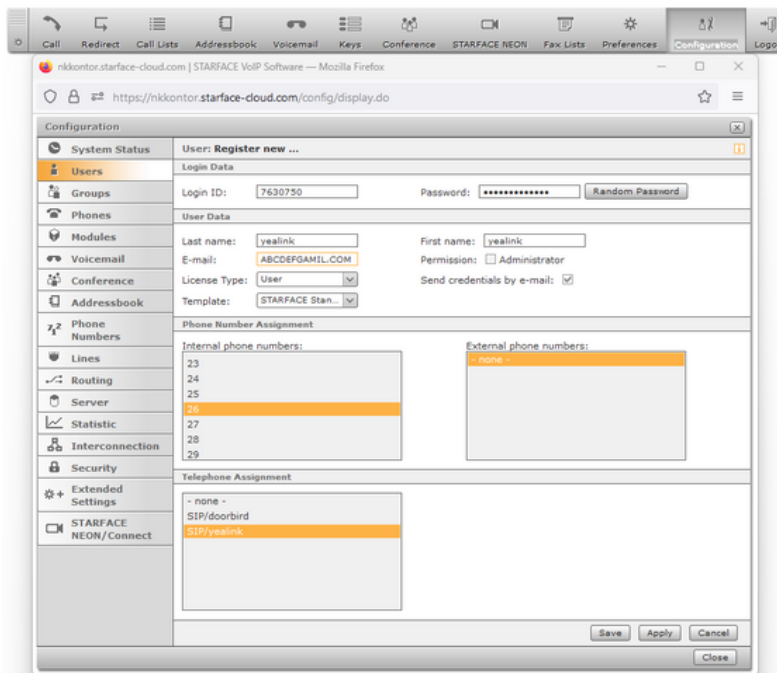


2.5 Click on Apply, then Click on Save.

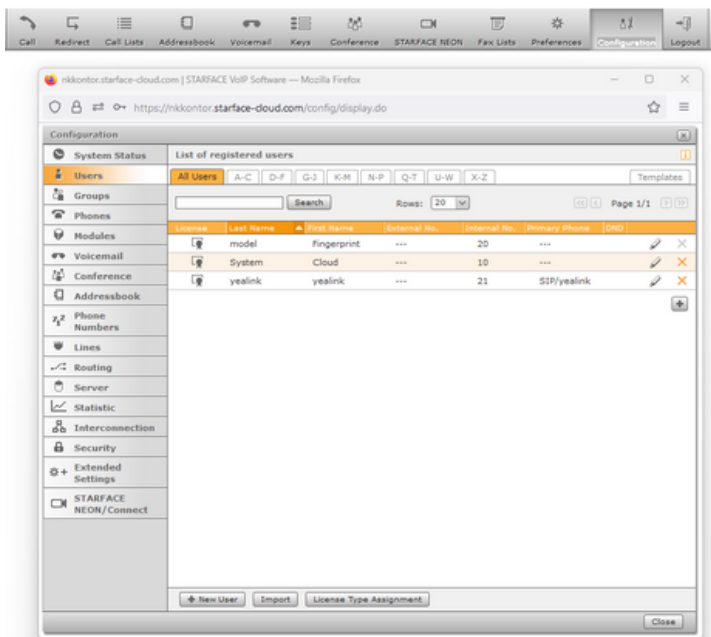
2.6 In order to add the Yealink SIP user please follow above steps from 2.1 to 2.3.

2.7 Then Choose Telephone Assignment as **SIP/Yealink** (configured Yealink in Step 1.5).

2.8 Click on Apply then Click on save.



2.9 After Registering all the Phones you can see as below. Please make sure your entered details are correct as well as the internal phone number should display.

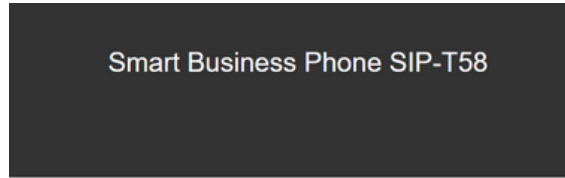


2.10 You can edit the details by clicking on Edit symbol

3. REGISTRATION OF YEALINK ACCOUNT

3.1 Login to Yealink website with entering the IP address on the browser (Firefox/Chrome).

Note: You can get the IP address of Yealink in General Settings on the Yealink Phone.



Login

admin

Login

3.2 Go to Register. Choose any one account to register for Starface.

The image shows the Yealink T58 web interface for account registration. On the left is a navigation menu with options: Status, Account, Register (highlighted), Basic, Codec, Advanced, Network, Dsskey, Features, Settings, Directory, and Security. The main area is titled 'Register' and contains the following fields:

- Account:** A dropdown menu currently showing 'Account 5'. A list of other accounts (Account 7 through Account 16) is visible below it.
- Register status:** A field with a question mark icon.
- Line Active:** A field with a question mark icon.
- Label:** A field with a question mark icon.
- Display Name:** A field with a question mark icon.
- Register Name:** A field with a question mark icon.
- Username:** A field with a question mark icon.
- Password:** A field with a question mark icon.
- SIP Server 1:**
 - Server Host:** A text input field with a question mark icon.
 - Port:** A text input field containing '5060' with a question mark icon.
 - Transport:** A dropdown menu set to 'UDP' with a question mark icon.
 - Server Expires:** A text input field containing '3600' with a question mark icon.
 - Server Retry Counts:** A text input field containing '3' with a question mark icon.
- SIP Server 2:**
 - Server Host:** A text input field with a question mark icon.
 - Port:** A text input field containing '5060' with a question mark icon.
 - Transport:** A dropdown menu set to 'UDP' with a question mark icon.

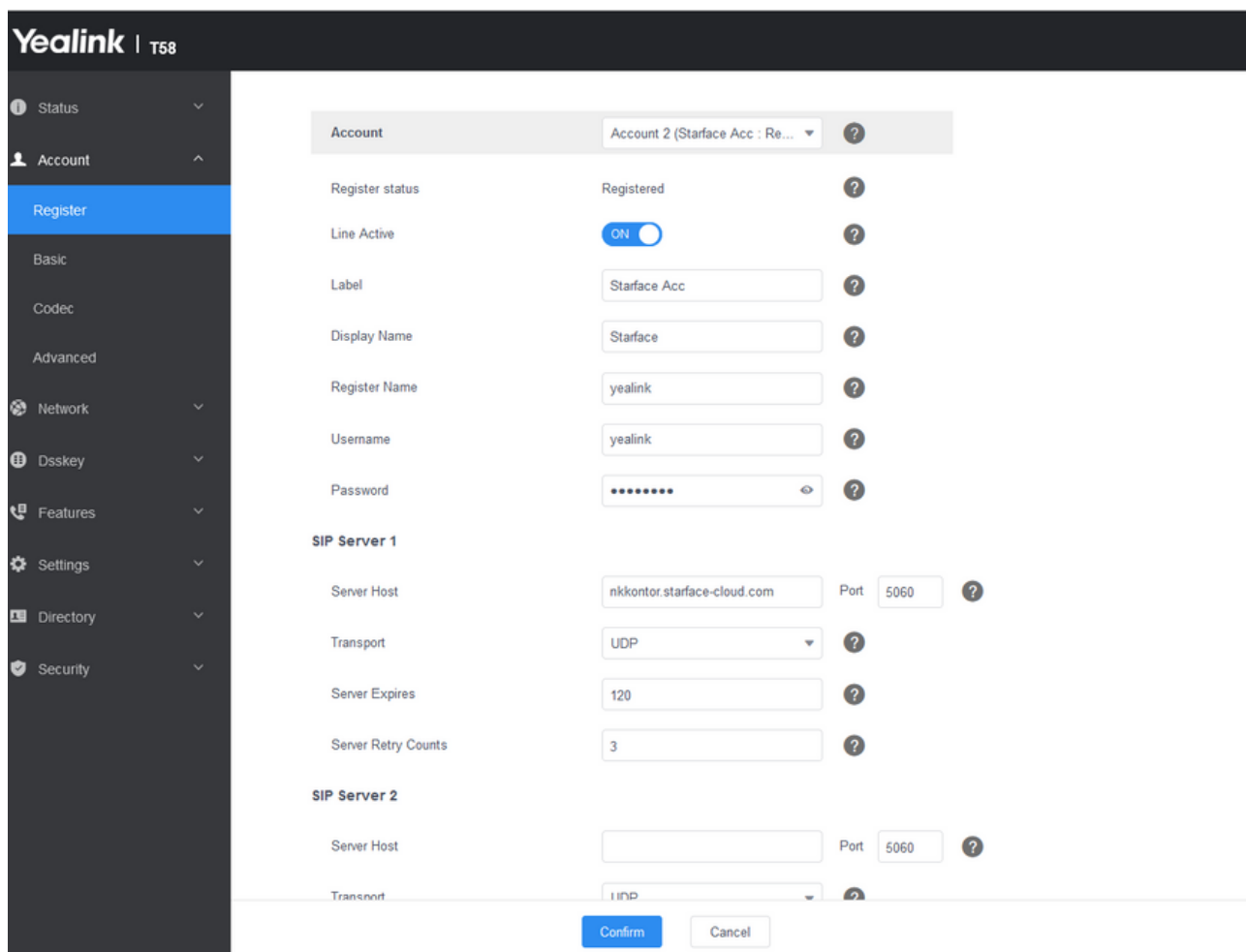
At the bottom of the form are 'Confirm' and 'Cancel' buttons.

3.3 Give a name for Label-->Starface Account, Display Name-->Starface, Register Name-->yealink, Username-->yealink, password-->Enter the same password which you entered while adding phones in the starface configuration.

3.4 In SIP Server 1 Enter SIP Host--> nkkontor.starface-cloud.com, port --> 5060,Transport --> UDP, Server Expires --> 120, Server Retry Counts --> 3.

3.5 Enable Line Active. Click on Confirm.

3.6 Check with the Register Status it should display Registered.
If not please check again the Inputs and Password.

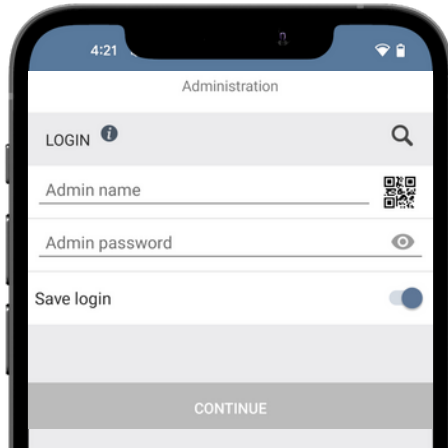


Note: Please Enter the Phone name and password in the place of Username and Password which were entered during the Starface configuration.

4. SETTING UP THE DOORBIRD IP VIDEO DOOR STATION

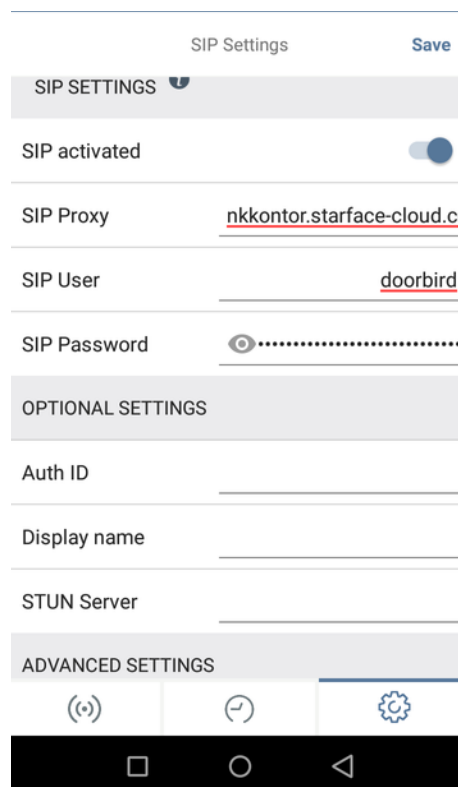
For the DoorBird IP Video Door Station to be properly able to communicate with the Starface Configuration, the DoorBird device's SIP settings must be adjusted accordingly.

4.1 Open the DoorBird App and log into the administration area under "Settings → Administration" using the administrator username and password credentials from the "DIGITAL PASSPORT" document that was shipped with your DoorBird IP Video Door Station.



4.2 Choose "SIP Settings" from the menu and activate the "SIP active" switch.

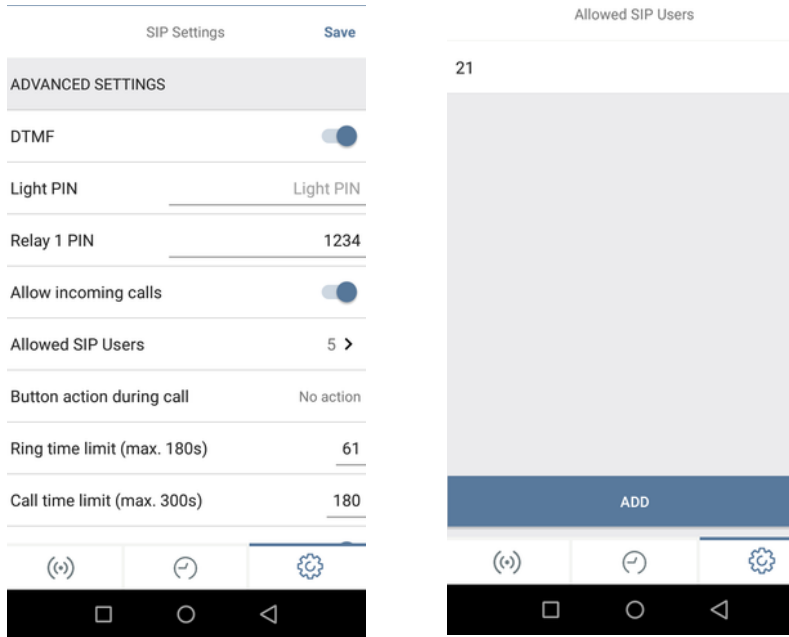
Enter SIP Proxy-->nkkontor.starface-cloud.com:5060 Enter SIP User and Password (Use Phone name and Password given in the Starface configuration).



4.3 If you want to Open Door/Trigger Relay during the call, then you can enable the DTMF and enter PIN.

4.4 If you want to call from Yealink to DoorBird, then enable Allow Incoming Calls. Enter the Internal phone number of Yealink in the Allowed SIP Users.

4.5 Save the SIP settings.

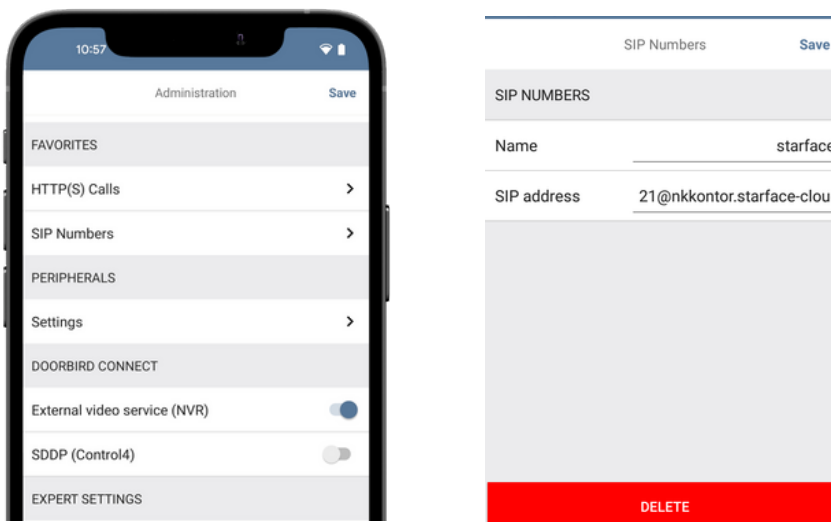


4.6 If Last Error code is 200 then the configured SIP Settings are correct otherwise please check again for the entered details.

4.7 Go back to the main administration area, tap on "SIP Numbers", then tap "Add".

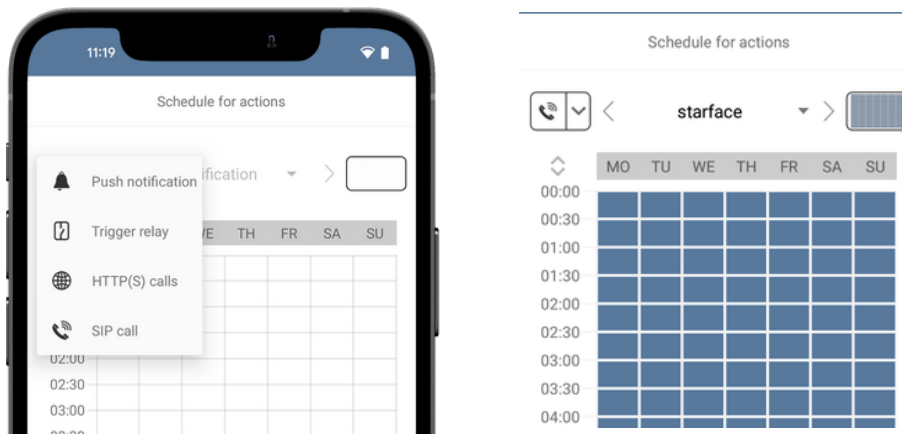
Note: Name --> Starface and SIP Address -->Yealink-Internal-PhoneNumber@nkkontor.starface-cloud.com:5060

4.8 Click on Save.



To call from the DoorBird IP Video Door Station to the Yealink device, schedule for doorbell needs to be properly set up. Depending on the model of the DoorBird IP Video Door Station, choose one of the following options:

- A) For devices with single doorbell (e.g., D10xx, etc.) in the administration area under "schedule for doorbell" from the settings menu. Select the appropriate button and tap "Schedule for actions". From this screen, tap the bell symbol in the upper left corner, choose "SIP call" and fill out the schedule per your requirements.
- B) For devices equipped with a keypad (e.g., D21xx) in the administration area under "Keypad" in the settings menu. Select the appropriate key combination and go to "Schedule for actions". From this screen, tap the bell symbol in the upper left corner, choose "SIP call" and fill out the schedule per your requirements.
- C) For all devices equipped with two doorbells (e.g., D11xx) in the administration area under "schedule for doorbell 1 or 2" in the settings menu. Select the appropriate key combination and go to "Schedule for actions". From this screen, tap the bell symbol in the upper left corner, choose "SIP call" and fill out the schedule per your requirements.



Hint: By tapping the button in the upper right corner it is possible to fill or empty the entire schedule.

4.9 Return to the main administration area and save the settings.

FIRMWARE INFORMATION

This manual was tested using the following versions:

1. Yealink

Hardware device series: Yealink-T58

Firmware Version: 58.86.0.20

2. Door Bird IP Video Door Station:

Hardware device series: D21DKH-V2A

Software Version: 000136

Hardware device series: D1102FV

Software Version: 000136

Hardware device series: D101S

Software Version: 000136

All companies, logos and product names are registered trademarks of the respective companies. Errors and omissions excepted - Last Update 01/2023 - Copyright © 2023 - Bird Home Automation GmbH - www.doorbird.com